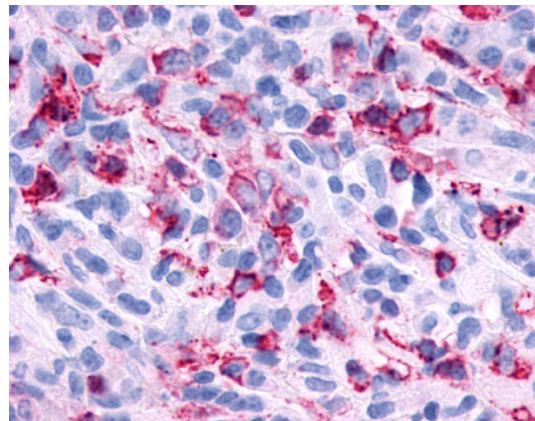


**SP4011P****Polyclonal Antibody to P2RY6 / P2Y6 (2nd Cytopl. Dom.) - Aff - Purified**

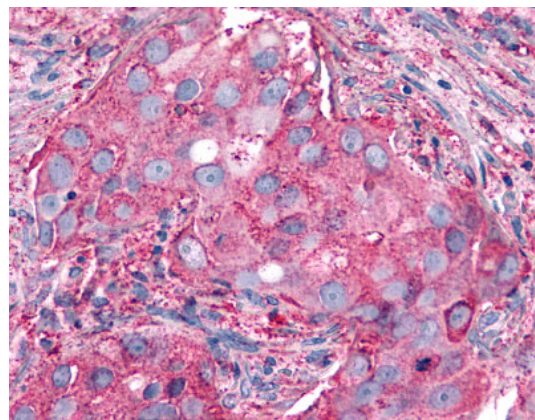
<b>Alternate names:</b>	P2Y purinoceptor 6, PP2891, Purinergic receptor
<b>Quantity:</b>	50 µg
<b>Concentration:</b>	1.0 mg/ml
<b>Background:</b>	<p>The purinergic receptor P2Y6 (P2RY6) is a member of the Purinergic Receptor subfamily. P2 receptors mediate a wide variety of physiologic effects in response to extracellular nucleotides. P2Y6 is believed to play a role in placental function and innate immune defense.</p> <p>P2Y6 expression has been documented in various blood cells, bone marrow, brain, colon, heart, kidney, ovary, placenta, spleen, and thymus. ESTs have been isolated from cervix, embryo, eye, kidney, liver/spleen, placenta, and vessel libraries.</p>
<b>Uniprot ID:</b>	<a href="#">Q1507Z</a>
<b>NCBI:</b>	<a href="#">NP_004145.1</a>
<b>GeneID:</b>	<a href="#">5031</a>
<b>Host:</b>	Rabbit
<b>Immunogen:</b>	<p>Synthetic 17 amino acid peptide from 2nd cytoplasmic domain of human P2RY6 / P2Y6</p> <p><b>Genename:</b> P2RY6</p> <p><b>Remarks:</b> BLAST analysis of the peptide immunogen showed no homology with other human proteins, except MOGAT1 (47%).</p> <p>Percent identity with other species by BLAST analysis: Human, Gorilla, Orangutan, Gibbon, Monkey, Marmoset, Rat, Hamster, Bovine, Rabbit, Pig (100%); Mouse, Panda, Dog, Bat (94%); Elephant, Pufferfish (82%)</p>
<b>Format:</b>	<p><b>State:</b> Liquid purified Ig fraction</p> <p><b>Purification:</b> Immunoaffinity Chromatography</p> <p><b>Buffer System:</b> PBS containing 0.09% Sodium Azide</p>
<b>Applications:</b>	<p><b>Immunohistochemistry on Paraffin Sections:</b> 17 - 34 µg/ml.</p> <p>Other applications not tested. Optimal dilutions are dependent on conditions and should be determined by the user.</p>
<b>Specificity:</b>	This antibody reacts with 2nd cytoplasmic domain of Purinergic Receptor P2Y6 (Family: GPCR , Subfamily: Purinergic).
<b>Species Reactivity:</b>	<b>Tested:</b> Human, Gorilla, Orangutan, Gibbon, Monkey, Marmoset, Rat, Hamster, Bovine, Rabbit, Pig, Mouse, Panda, Dog, Bat, Elephant, Pufferfish
<b>Storage:</b>	<p>Store the antibody undiluted at 2-8°C for one month or (in aliquots) at -20°C to -70°C for longer.</p> <p>Avoid repeated freezing and thawing.</p> <p>Shelf life: one year from despatch.</p>

**Pictures:**

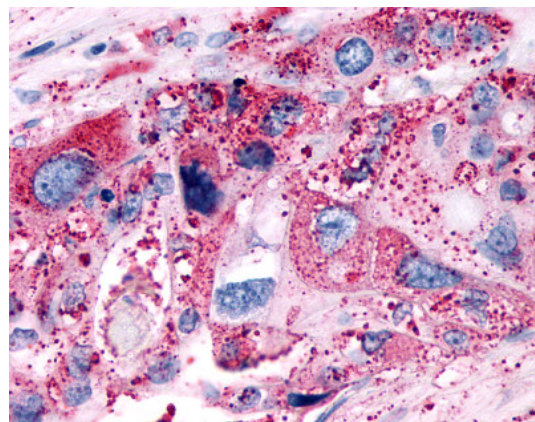
Anti-P2RY6 / P2Y6 antibody IHC of human Lymph Node, Non-Hodgkins Lymphoma. Immunohistochemistry of formalin-fixed, paraffin-embedded tissue after heat-induced antigen retrieval.



Anti-P2RY6 / P2Y6 antibody IHC of human Breast, Carcinoma. Immunohistochemistry of formalin-fixed, paraffin-embedded tissue after heat-induced antigen retrieval.



Anti-P2RY6 / P2Y6 antibody IHC of human Pancreas, Carcinoma. Immunohistochemistry of formalin-fixed, paraffin-embedded tissue after heat-induced antigen retrieval.



Anti-P2RY6 / P2Y6 antibody IHC of human spleen, red pulp. Immunohistochemistry of formalin-fixed, paraffin-embedded tissue after heat-induced antigen retrieval.

