

SP4010P**Polyclonal Antibody to P2RY6 / P2Y6 (C-term) - Aff - Purified**

Alternate names:	P2Y purinoceptor 6, PP2891, Purinergic receptor
Quantity:	50 µg
Concentration:	1 mg/ml
Background:	<p>The purinergic receptor P2Y6 (P2RY6) is a member of the Purinergic Receptor subfamily. P2 receptors mediate a wide variety of physiologic effects in response to extracellular nucleotides. P2Y6 is believed to play a role in placental function and innate immune defense.</p> <p>P2Y6 expression has been documented in various blood cells, bone marrow, brain, colon, heart, kidney, ovary, placenta, spleen, and thymus. ESTs have been isolated from cervix, embryo, eye, kidney, liver/spleen, placenta, and vessel libraries.</p>
Uniprot ID:	Q1507Z
NCBI:	NP_004145.1
GeneID:	5031
Host:	Rabbit
Immunogen:	<p>Synthetic 17 amino acid peptide from C-terminus of human P2RY6 / P2Y6 Genename: P2RY6 Remarks: Percent identity with other species by BLAST analysis: Human, Gorilla, Orangutan, Gibbon, Monkey, Marmoset, Panda (100%); Dog, Pig (94%); Hamster, Bovine, Bat (88%); Rat, Rabbit (82%). BLAST analysis of the peptide immunogen showed no homology with other human proteins, except HTT (59%).</p>
Format:	<p>State: Liquid purified Ig fraction Purification: Peptide Immunogen Affinity Chromatography Buffer System: PBS containing 0.09% Sodium Azide as preservative</p>
Applications:	<p>Immunocytochemistry: 8 - 16 µg/ml. Immunohistochemistry on Paraffin Sections: 3 - 16 µg/ml. Other applications not tested. Optimal dilutions are dependent on conditions and should be determined by the user.</p>
Specificity:	This antibody reacts with C-terminus of Purinergic Receptor P2Y6 (Family: GPCR, Subfamily: Purinergic).
Species Reactivity:	Tested: Human, Gorilla, Orangutan, Gibbon, Monkey, Marmoset, Panda, Dog, Pig, Hamster, Bovine, Bat, Rat, Rabbit
Storage:	Store the antibody at 2-8°C for one month or (in aliquots) at -20°C to -70°C for longer. Avoid repeated freezing and thawing. Shelf life: one year from despatch.

Pictures:

Figure 1. Immunohistochemical staining of spleen red pulp using anti-P2RY6 antibody SP4010P.

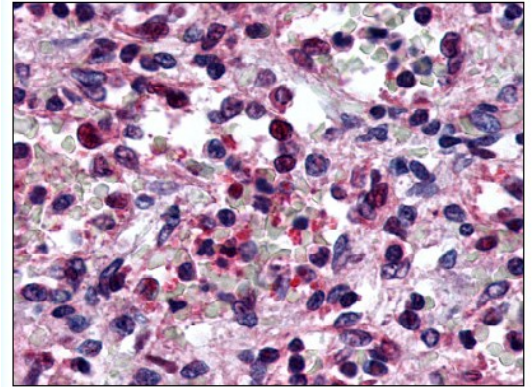
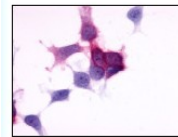
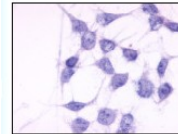


Figure 2. Transfection using anti-P2RY6 antibody (SP4010P)

Transfection Images:



Cells expressing target protein - immunostained with target antibody



Cells expressing vector only - immunostained with target antibody