

**SP4004P****Polyclonal Antibody to CDw198 / CCR8 (C-term) - Aff - Purified****Alternate names:**

C-C CKR-8, C-C chemokine receptor type 8, CC-CKR-8, CC-chemokine receptor CHEMR1, CCR-8, CKRL1, CMKBR8, CMKBRL2, CMKBRL2, Chemokine receptor-like 1, GPR-CY6, TER1

**Quantity:**

50 µg

**Concentration:**

1.0 mg/ml

**Background:**

CCR8 is a member of the beta chemokine receptor family, which is predicted to be a seven transmembrane protein similar to G protein coupled receptors. Chemokines and their receptors are important for the migration of various cell types into the inflammatory sites. This receptor protein preferentially expresses in the thymus. I-309, thymus activation regulated cytokine (TARC) and macrophage inflammatory protein 1 beta (MIP1 beta) have been identified as ligands of this receptor. Studies of this receptor and its ligands suggested its role in regulation of monocyte chemotaxis and thymic cell apoptosis. More specifically, this receptor may contribute to the proper positioning of activated T cells within the antigenic challenge sites and specialized areas of lymphoid tissues. This gene is located at the chemokine receptor gene cluster region. CCR8 expression has been reported in spleen and thymus, natural killer cells, monocytes, and T cells, and at lower levels in peripheral blood leukocytes. CCR8 is also believed to be alternative coreceptor with CD4 for HIV-1 infection.

**Uniprot ID:**

[P51685](#)

**NCBI:**

[NP\\_005192.1](#)

**GeneID:**

[1237](#)

**Host:**

Rabbit

**Immunogen:**

Synthetic 19 amino acid peptide from C-terminus of human CCR8

**Genename:** CCR8

**Remarks:** BLAST analysis of the peptide immunogen showed no homology with other human proteins.

Percent identity with other species by BLAST analysis: Human (100%); Gorilla (95%); Gibbon, Monkey (89%); Marmoset (84%).

**Format:**

**State:** Liquid Ig fraction

**Purification:** Peptide immunogen affinity column

**Buffer System:** PBS, containing 0.09% sodium azide

**Applications:**

**Immunohistochemistry on Paraffin Sections:** 22 µg/ml.

Other applications not tested. Optimal dilutions are dependent on conditions and should be determined by the user.

**Specificity:**

Detectes C-terminus of C-C Chemokine Receptor 8 (Family: GPCR, Subfamily: Chemokine).

**Species Reactivity:**

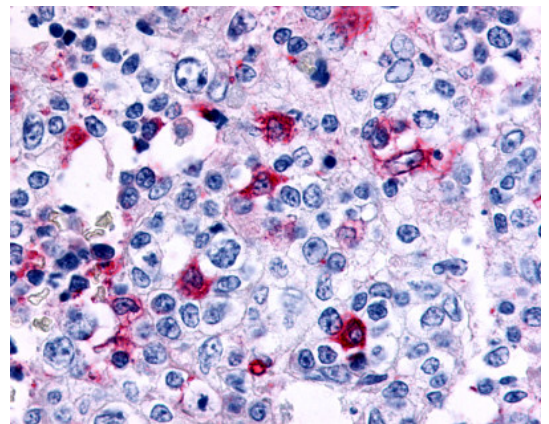
**Tested:** Human, Gorilla, Gibbon, Monke, Marmoset

**Storage:**

Store the antibody at 2-8°C for up to one month or at -20°C to -70°C for longer. Avoid repeated freezing and thawing.  
Shelf life: one year from despatch.

**Pictures:**

Anti-CCR8 antibody IHC of human tonsil, germinal center. Immunohistochemistry of formalin-fixed, paraffin-embedded tissue after heat-induced antigen retrieval.



Anti-CCR8 antibody IHC of human Lymph Node, Non-Hodgkins Lymphoma. Immunohistochemistry of formalin-fixed, paraffin-embedded tissue after heat-induced antigen retrieval.

