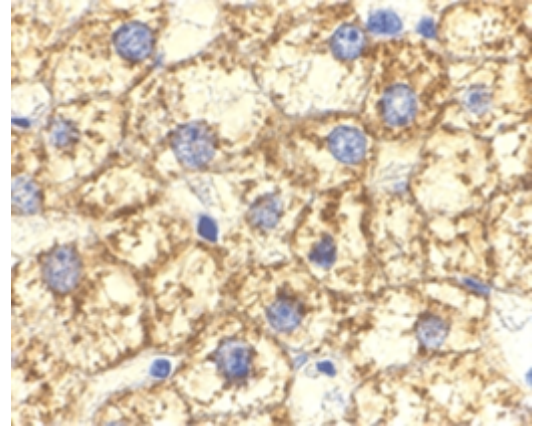


Polyclonal Antibody to AKT1 / PKB (N-term) - Aff - Purified

Alternate names:	Akt-1, C-AKT, Protein kinase B, RAC-PK-alpha, RAC-alpha serine/threonine-protein kinase
Catalog No.:	SP2174PS
Quantity:	50 µg
Concentration:	1.0 mg/ml
Background:	<p>Akt1 is a 48 kDa protein kinase forming part of the PI3K-Akt signalling pathway, known to regulate cell growth, proliferation and survival. The PI3K-Akt1 pathway is negatively regulated by the tumour suppressor PTEN.</p> <p>Excessive Akt1 activation can lead to the formation of malignant tumours, and has been associated with prostate cancer progression.</p>
Uniprot ID:	P31749
NCBI:	NP_001014431.1
GeneID:	207
Host / Isotype:	Rabbit / IgG
Immunogen:	A 16 amino acid peptide located near the human Akt1 amino-terminus
Format:	State: Liquid Ig fraction Purification: Affinity chromatography Buffer System: Phosphate buffered saline, 0.02 % Sodium Azide
Applications:	<p>Western blot (1.0 µg/ml, detects a band of approximately 48 kDa in human liver cell lysates).</p> <p>Other applications not tested. Optimal dilutions are dependent on conditions and should be determined by the user.</p>
Specificity:	<p>This antibody recognises the N-terminal region of Akt1.</p> <p>Species: Human, Mouse, Rat.</p> <p>Other species not tested.</p>
Storage:	<p>Store the antibody at 2 - 8 °C up to one month or (in aliquots) at -20 °C for longer. Avoid repeated freezing and thawing. Should this product contain a precipitate we recommend microcentrifugation before use.</p> <p>Shelf life: one year from despatch.</p>
General Readings:	1. Stern, D. F. (2004) More than a marker...Phosphorylated Akt in prostate carcinoma. Clin. Cancer Res. 10: 6407-6410.

Pictures:

Immunohistochemical staining of human liver with Rabbit anti Human Akt1 (SP2174P)



Western blot analysis of human liver cell lysate probed with Rabbit anti Human Akt1 (SP2174P) at 1(A) and 2(B) µg/ml

