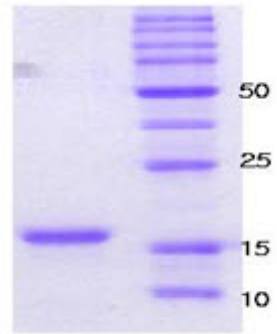


**SA6003****Human Alpha-Synuclein / SNCA (A30P/A53T Mutant) - Purified**

<b>Alternate names:</b>	NACP, Non-A beta component of AD amyloid, Non-A4 component of amyloid precursor, PARK1
<b>Quantity:</b>	0.1 mg
<b>Background:</b>	Alpha-Synuclein, an acidic neuronal protein, is extremely heat-resistant and is natively unfolded with an extended structure primarily composed of random coils. Alpha-Synuclein has been suggested to be implicated in the pathogenesis of Parkinson's disease and related neurodegenerative disorders, and more recently, to be an important regulatory component of vesicular transport in neuronal cells. Moreover, recent studies have shown that alpha-synuclein has chaperone activity and that this activity is lost upon removing its C-terminal acidic tail (amino acids 96-140).
<b>Uniprot ID:</b>	<a href="#">P37840</a>
<b>NCBI:</b>	<a href="#">NP_000336.1</a>
<b>GeneID:</b>	<a href="#">6622</a>
<b>Species:</b>	Human
<b>Source:</b>	E. coli
<b>Format:</b>	<b>State:</b> Liquid protein <b>Purity:</b> >95% by SDS-PAGE <b>Buffer System:</b> 20 mM Tris-HCl buffer (pH 7.5) containing 0.1 M NaCl
<b>Description:</b>	A Parkinson's disease-related double mutant (A30P/A53T) of $\alpha$ -synuclein. The recombinant protein was purified to apparent homogeneity by taking advantage of the thermosolubility of the protein and by using conventional column chromatography techniques. <b>AA Sequence:</b> MDVFMKGLSK AKEGVVAAAE KTKQGVAEAP GKTKEGVLYV GSKTKEGVVH GVTTVAEKT EQVTNVGGAV VTGVTAVAQK TVEGAGSIAA ATGFVKKDQL GKNEEGAPQE GILEDMPVDP DNEAYEMPSE EGYQDYEPEA <b>Molecular weight:</b> 14.516 kDa
<b>Add. Information:</b>	Real molecular weight on SDS-PAGE will be shift up (see picture below).
<b>Storage:</b>	Store at 2 - 8 °C for up to one month or (in aliquots) at -20 °C. Avoid repeated freezing and thawing. Shelf life: one year from despatch.
<b>General Readings:</b>	1. Kruger R, et al. (1998) Nat Genet. 18, 106-108. 2. Polymeropoulos M. H., et al. (1997) Science 276, 2045-2047. 3. Park, S. M. et al. (2002) Blood,100(7), 2506-2514.

Pictures:



15% SDS-PAGE (3ug)