

## Test our Collagen I and II Bestseller Antibodies !

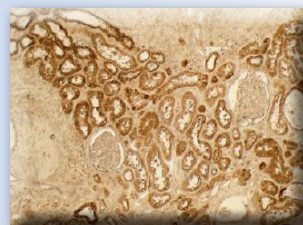
Collagens are highly conserved throughout evolution and are characterized by an uninterrupted „Glycine-X-Y“ triplet repeat that is a necessary part of the triple helical structure. For these reasons, it is often extremely difficult to generate antibodies with specificities to collagens. The development of type specific antibodies is dependent on non-denaturated three-dimensional epitopes. Collagens for immunization from human and bovine placenta and cartilage have been extensively purified by limited pepsin digestion and selective salt precipitation. This preparation results in a native conformation of the protein. Antibodies are isolated from rabbit antiserum and are extensively cross-adsorbed by immunoaffinity purification to produce ‚type‘ specific antibodies. Greatly diminished reactivity and selectivity of these antibodies will result if denaturing and reducing conditions are used for SDS PAGE and immunoblotting.

### Collagen type I antibody - Cat.-No. R1038

is evaluated for immunohistochemistry, immunoprecipitation, ELISA and Western blotting.



◀ Collagen



**Right:** Immunohistochemistry of distal tubules in normal kidney tissue (formalin-fixed, paraffin-embedded - FFPE) using affinity purified Collagen I antibody Cat.-No. R1038

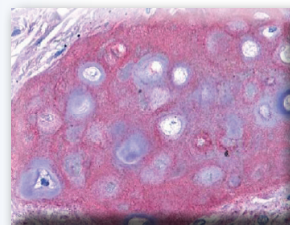
**Left:** Western blot analysis is shown using Collagen I antibody Cat.-No. R1038 to detect expression of Collagen I in Wistar rat hepatic stellate cells (HSC) in control (GFP-transduced) (left lane) and PPARgamma-transduced cell lysates (right lane)

#### Product references

Villone et al; J Biol Chem, 2008; 283: 24506-13. [PMID: 18599485]  
Behrens et al; J Biol Chem, 2012; 287: 18700-09. [PMID: 22493504]

### Collagen type II antibody - Cat.-No. R1039

is evaluated for immunohistochemistry, immunoprecipitation, ELISA and Western blotting.



Collagen II antibody Cat.-No. R1039 showed moderate staining of human bronchiolar cartilage (FFPE)

**30%**

**Special 'ProMo' offer within September 2012:  
Receive 30% discount\* on our bestseller antibodies:  
Collagen type I antibody Cat.-No. R1038  
Collagen type II antibody Cat.-No. R1039**

\* Valid within September 2012. Does not apply to bulk orders; no additional discounts apply; as long as stock lasts