

PP1204P1**Polyclonal Antibody to CXCL16 - Aff - Purified****Alternate names:**

C-X-C motif chemokine 16, SCYB16, SR-PSOX, SRPSOX, Scavenger receptor for phosphatidylserine and oxidized low density lipoprotein, Small-inducible cytokine B16, Transmembrane chemokine CXCL16

Quantity:

50 µg

Background:

CXCL16 acts as a scavenger receptor on macrophages, which specifically binds to OxLDL (oxidized low density lipoprotein), suggesting that it may be involved in pathophysiology such as atherogenesis (By similarity). Induces a strong chemotactic response. Induces calcium mobilization. Binds to CXCR6/Bonzo. It is a type I membrane protein (Potential). Also exists as a soluble form. Expressed in spleen, lymph nodes, lung, kidney, small intestine and thymus. Weak expression in heart and liver and no expression in brain and bone marrow.

Uniprot ID:

[Q9H2A7](#)

NCBI:

[NP_001094282.1](#)

GeneID:

[58191](#)

Host:

Rabbit

Immunogen:

Highly pure (> 98%) *E.coli* derived 10.1 kDa recombinant Human CXCL16 (Cat.-No AR31138PU)

Format:

State: Lyophilized (sterile filtered) purified Ig fraction

Purification: Affinity Chromatography employing immobilized hCXCL16 matrix

Buffer System: PBS, pH 7.2 without preservatives

Reconstitution: Restore in sterile water to a concentration of 0.1-1.0 mg/ml

Applications:

Sandwich ELISA: To detect Human CXCL16 by Sandwich ELISA (using 100 µl/well antibody solution) a concentration of 0.5-2.0 µg/ml of this antibody is required. This antibody, in conjunction with a Biotinylated anti-Human CXCL16 (*cat.no.* PP1204B1 or PP1204B2) as a Detection antibody, allows the detection of 0.2-0.4 ng/well of recombinant Human CXCL16.

Western Blot: To detect Human CXCL16 by Western Blot analysis this antibody can be used at a concentration of 0.1-0.2 µg/ml. The detection limit for recombinant Human CXCL16 is 1.5-3.0 ng/lane, under either reducing or non-reducing conditions.

Immunohistochemistry: The antibody stained FFPE Sections of Human colorectal adenocarcinoma tissue. An HRP-labelled polymer detection system was used with a DAB chromogen. Antigen retrieval is not required for these conditions.

Working Dilution: 0.5 µg/ml, overnight incubation at 4°C.

Other applications not tested. Optimal dilutions are dependent on conditions and should be determined by the user.

Specificity:

This antibody recognizes Human CXCL16. Other species not tested.

Add. Information:

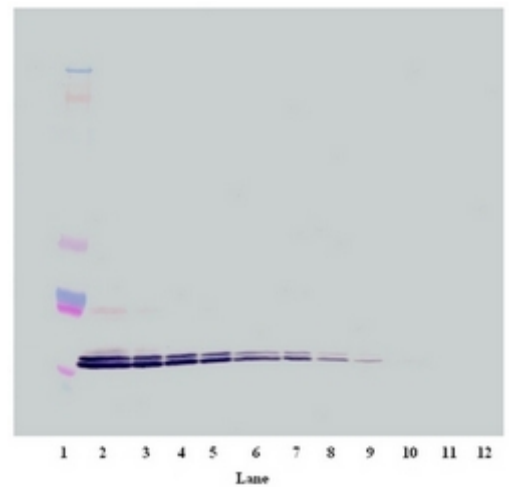
Centrifuge vial prior to opening!

Storage: Prior to reconstitution store at -20°C.
 Following reconstitution store undiluted at 2-8°C for two weeks or (in aliquots) at -20°C for longer.
 Avoid repeated freezing and thawing.
 Shelf life: one year from despatch.

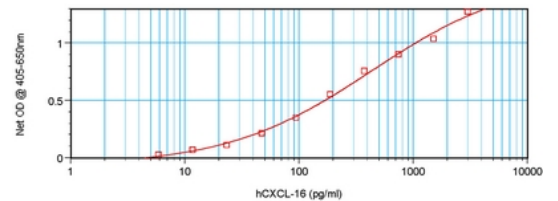
Product Citations: **Purchased from Acris:**
 1. Gutwein P, Abdel-Bakky MS, Schramme A, Doberstein K, Kämpfer-Kolb N, Amann K, et al. CXCL16 is expressed in podocytes and acts as a scavenger receptor for oxidized low-density lipoprotein. *Am J Pathol.* 2009 Jun;174(6):2061-72. doi: 10.2353/ajpath.2009.080960. Epub 2009 May 12. PubMed PMID: 19435795.

General Readings:
 1. Scholz F, Schulte A, Adamski F, Hundhausen C, Mittag J, Schwarz A, et al. Constitutive expression and regulated release of the transmembrane chemokine CXCL16 in human and murine skin. *J Invest Dermatol.* 2007 Jun;127(6):1444-55. Epub 2007 Mar 15. PubMed PMID: 17363916.

Pictures: Western Blot (Unreduced) using CXCL16 antibody cat.no. PP1204P



Sandwich ELISA using CXCL16 antibody cat.no. PP1204P



Formalin-Fixed Paraffin-Embedded Sections of human colorectal adenocarcinoma stained with CXCL16 antibody cat.no. PP1204P

