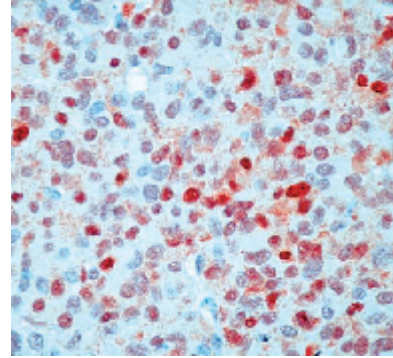


## Monoclonal Antibody to BAG1 - Purified

<b>Alternate names:</b>	BAG family molecular chaperone regulator 1, BAG-1, Bcl-2-associated athanogene 1, Glucocorticoid receptor-associated protein RAP46, HAP, RAP46
<b>Catalog No.:</b>	DM335
<b>Quantity:</b>	1 ml
<b>Background:</b>	BAG-1 is a multifunctional protein, which regulates several cellular processes including cell survival, signal transduction and protein folding. BAG-1 blocks apoptosis and interacts with several types of proteins, including bcl-2 family proteins, the kinase Raf-1, tyrosine kinase growth factor receptors and steroid hormone receptors.
<b>Uniprot ID:</b>	<a href="#">Q99933</a>
<b>NCBI:</b>	<a href="#">NP_001165886.1</a>
<b>GeneID:</b>	<a href="#">573</a>
<b>Host / Isotype:</b>	Mouse / IgG1
<b>Recommended Isotype Controls:</b>	SM10P (for use in human samples), AM03095PU-N
<b>Clone:</b>	3.10G3E2
<b>Immunogen:</b>	BALB/C mice were injected with full length recombinant human BAG-1 protein.
<b>Format:</b>	<b>State:</b> Liquid purified Ig fraction containing sodium azide as preservative
<b>Applications:</b>	Immunoprecipitation. Western Blot: 1:100-500. Immunohistochemistry : dilute 1:25-1:50 in an ABC method (incubation time 30 minutes at room temperature). Recommended positive control: Breast carcinoma Other applications not tested. Optimal dilutions are dependent on conditions and should be determined by the user.
<b>Specificity:</b>	This antibody reacts with a 36 kD protein known as BAG-1. Cellular Localization: Nuclear, cytoplasmic <b>Species:</b> Human. Other species not tested.
<b>Storage:</b>	Store the antibody undiluted at 2-8°C for one month or (in aliquots) at -20°C for longer. Avoid repeated freezing and thawing. Shelf life: one year from despatch.
<b>General Readings:</b>	1. Hohfeld et al. J Biol Chem 379 (3): 269, 1998. 2. Takayama et al. EMBO 16 (16): 4887, 1997.

Pictures:

Formalin fixed paraffin embedded human breast carcinoma stained with BAG-1 antibody (DM335, DM335-05)



Western blot analysis of human lung cell extract with BAG-1 (DM335, DM335-05)

