

BM4501**Monoclonal Antibody to Lamin-B1 (LMNB1) - Purified**

Alternate names:	LMN2, LMNB, LMNB-1, LMNB1, Lamin-B1, Nuclear Envelope Marker
Quantity:	0.1 mg
Concentration:	1.0 mg/ml
Background:	<p>Nuclear lamins form a network of intermediate-type filaments at the nucleoplasmic site of the nuclear membrane. Two main subtypes of nuclear lamins can be distinguished, i.e. A-type lamins and B-type lamins. The A-type lamins comprise a set of three proteins arising from the same gene by alternative splicing, i.e. lamin A, lamin C and lamin A/B, while the B-type lamins include two proteins arising from two distinct genes, i.e. lamin B1 and lamin B2.</p> <p>Lamins play a crucial role in the maintenance of nuclear structure, gene regulation, and signaling from cytoplasm to nucleus. Mutations in lamins have been associated with a number of pathologies; the so-called laminopathies.</p>
Uniprot ID:	P20700
NCBI:	NP_005564.1
GenelD:	4001
Host / Isotype:	Mouse / IgG1
Recommended Isotype Controls:	SM10P (for use in human samples), SM20P (for use in rat samples), AM03095PU-N
Clone:	119D5-F1
Immunogen:	<p>Purified Rat liver lamins.</p> <p>119D5-F1 is a Mouse monoclonal IgG1/k antibody derived by fusion of P3/X63.Ag8.653 mouse myeloma cells with spleen cells from a BALB/c mouse.</p>
Format:	<p>State: Liquid purified Ig fraction</p> <p>Buffer System: PBS containing 0.09% Sodium Azide as preservative</p>
Applications:	<p>ELISA.</p> <p>Flow cytometry: 1/100-1/200.</p> <p>Immunohistochemistry on Frozen Sections.</p> <p>Immunocytochemistry: 1/100-1/200 with Avidin-Biotinylated Horseradish peroxidase complex (ABC) as detection reagent.</p> <p>Western blot: 1/100-1/1000.</p> <p>Other applications not tested. Optimal dilutions are dependent on conditions and should be determined by the user.</p>
Molecular Weight:	67 kDa (Predicted)
Specificity:	<p>The antibody Clone 119D5-F1 reacts with an epitope located C-terminal of residue 231 in Lamin B1.</p> <p>Species: Bovine, Canine, Human, Mouse, Rabbit, Rat, Sheep, Zebrafish.</p> <p>Other species not tested.</p>

Storage:

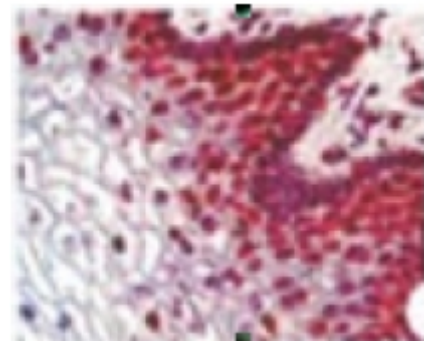
Store undiluted at 2-8°C for one month or (in aliquots) at -20°C for longer.
Avoid repeated freezing and thawing.
Shelf life: one year from despatch.

General Readings:

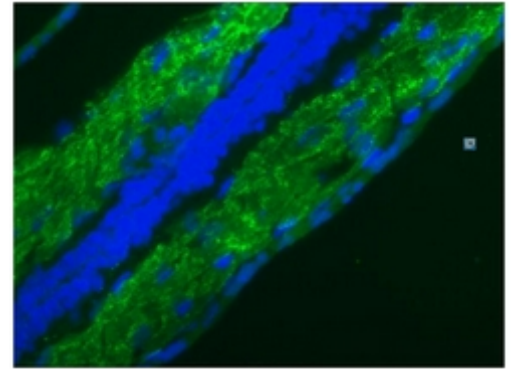
1. Weaver VM, Carson CE, Walker PR, Chaly N, Lach B, Raymond Y, et al. Degradation of nuclear matrix and DNA cleavage in apoptotic thymocytes. *J Cell Sci.* 1996 Jan;109 (Pt 1):45-56. PubMed PMID: 8834789.
2. Pugh GE, Coates PJ, Lane EB, Raymond Y, Quinlan RA. Distinct nuclear assembly pathways for lamins A and C lead to their increase during quiescence in Swiss 3T3 cells. *J Cell Sci.* 1997 Oct;110 (Pt 19):2483-93. PubMed PMID: 9410886.
3. Broers JL, Machiels BM, Kuijpers HJ, Smedts F, van den Kieboom R, Raymond Y, et al. A- and B-type lamins are differentially expressed in normal human tissues. *Histochem Cell Biol.* 1997 Jun;107(6):505-17. PubMed PMID: 9243284.
4. Machiels BM, Broers JL, Raymond Y, de Ley L, Kuijpers HJ, Caberg NE, et al. Abnormal A-type lamin organization in a human lung carcinoma cell line. *Eur J Cell Biol.* 1995 Aug;67(4):328-35. PubMed PMID: 8521872.
5. Machiels BM, Ramaekers FC, Kuijpers HJ, Groenewoud JS, Oosterhuis JW, Looijenga LH. Nuclear lamin expression in normal testis and testicular germ cell tumours of adolescents and adults. *J Pathol.* 1997 Jun;182(2):197-204. PubMed PMID: 9274531.
6. Jansen MP, Machiels BM, Hopman AH, Broers JL, Bot FJ, Arends JW, et al. Comparison of A and B-type lamin expression in reactive lymph nodes and nodular sclerosing Hodgkin's disease. *Histopathology.* 1997 Oct;31(4):304-12. PubMed PMID: 9363444.
7. Neri LM, Raymond Y, Giordano A, Capitani S, Martelli AM. Lamin A is part of the internal nucleoskeleton of human erythroleukemia cells. *J Cell Physiol.* 1999 Mar;178(3):284-95. PubMed PMID: 9989774.
8. Broers JL, Bronnenberg NM, Kuijpers HJ, Schutte B, Hutchison CJ, Ramaekers FC. Partial cleavage of A-type lamins concurs with their total disintegration from the nuclear lamina during apoptosis. *Eur J Cell Biol.* 2002 Dec;81(12):677-91. PubMed PMID: 12553668.
9. Broers JL, Ramaekers FC, Bonne G, Yaou RB, Hutchison CJ. Nuclear lamins: laminopathies and their role in premature ageing. *Physiol Rev.* 2006 Jul;86(3):967-1008. PubMed PMID: 16816143.

Pictures:

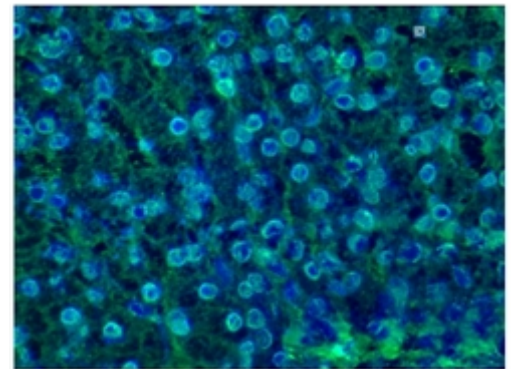
Immunohistochemistry: BM4501 Lamin B1 antibody Immunostaining of Human epidermis.



Immunofluorescence staining of a 9 days old Zebrafish embryos. Frozen section fixed in Acteone/Methanol: 1/1. BM4501 diluted at 1/100, incubated for 45 minutes at RT.



Immunohistochemistry on frozen sections of swine liver showing nuclear lamina staining in hepatocytes.



Immunohistochemistry on frozen sections of human colon showing nuclear lamina staining in epithelial and connective tissue cells.

