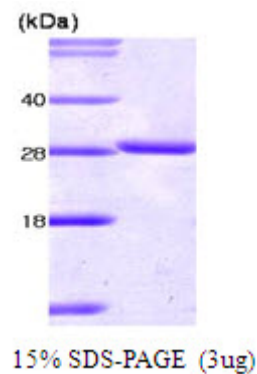


AR09103PU-N**Recombinant human 14-3-3 theta (aa 1-245)****Alternate names:** 14-3-3 protein T-cell, 14-3-3 protein tau, Protein HS1, YWHAQ**Quantity:** 0.1 mg**Concentration:** 1.0 mg/ml**Background:** The 14-3-3 family of proteins plays a key regulatory role in signal transduction, checkpoint control, apoptotic and nutrient-sensing pathways. 14-3-3 proteins are highly conserved and ubiquitously expressed. There are at least seven isoforms, β , γ , ϵ , σ , ζ , τ and η that have been identified in mammals. The 14-3-3 tau, a subtype of the 14-3-3 family of proteins, was found in T Cells, brain and testes. This 14-3-3 tau is upregulated in patients with amyotrophic lateral sclerosis.**Uniprot ID:** [P27348](#)**NCBI:** [NP_006817.1](#)**GeneID:** [10971](#)**Species:** Human**Source:** E. coli**Format:** **State:** Liquid purified protein
Purity: ≥ 95 by SDS-PAGE
Buffer System: 20 mM Tris pH 7.5**Description:** Recombinant human YWHAQ was expressed in E.coli and purified by using conventional chromatography techniques.**AA Sequence:**MEKTELIQKA KLAEQAERYD DMATCMKAVT EQGAELSNEE RNLLSVAYKN VVGRRSAWR
VISSIEQKTD TSDKKLQLIK DYREKVESEL RSICTTVLEL LDKYLIANAT NPESKVFYK
MKGDFRYLA EVACGDDRKQ TIDNSQGAYQ EAFDISKKEM QPHTPIRLGL ALNFSVFYYE
ILNNPELACT LAKTAFDEAI AELDTLNEDS YKDSTLIMQL LRDNLTLWTS DSAGEECDAA EGAEN**Molecular weight:** kDa (245 aa)**Storage:** Store (in aliquots) at -20°C . Avoid repeated freezing and thawing.
Shelf life: one year from despatch.**Pictures:**

14-3-3 tau, 1-245 aa: 15% SDS-PAGE (3 μ g)

