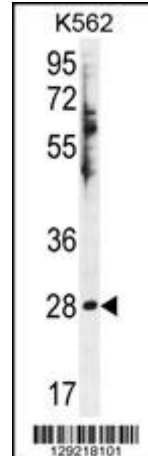


## Polyclonal Antibody to 11-beta-HSD3 / HSD11B1L (C-term) - Aff - Purified

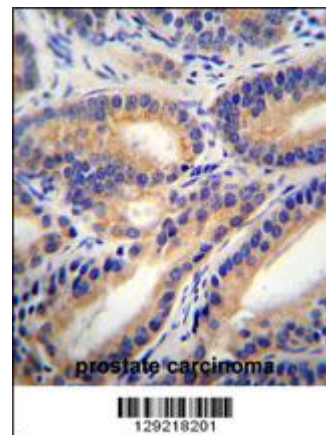
<b>Alternate names:</b>	1-beta-hydroxysteroid dehydrogenase type 3, HSD3, SCDR10, Short-chain dehydrogenase/reductase 10
<b>Catalog No.:</b>	AP52106PU-N
<b>Quantity:</b>	0.4 ml
<b>Concentration:</b>	lot specific
<b>Uniprot ID:</b>	<a href="#">Q7Z511</a>
<b>NCBI:</b>	<a href="#">NP_940935</a>
<b>GeneID:</b>	<a href="#">374875</a>
<b>Host / Isotype:</b>	Rabbit / Ig
<b>Immunogen:</b>	Synthetic peptide - KLH conjugated - corresponding to the C-terminal region (between 263-291aa) of human 11-beta-HSD3 / HSD11B1L at C-term.
<b>Format:</b>	<b>State:</b> Liquid purified Ig fraction <b>Purification:</b> Purified through a protein A column, followed by peptide affinity purification <b>Buffer System:</b> PBS with 0.09% (W/V) sodium azide
<b>Applications:</b>	This antibody is suitable for Immunofluorescence, Immunohistochemistry (paraffin sections) and Western blotting. The suggested dilution is: <b>Western blotting:</b> 1/100-1/500 <b>Immunohistochemistry:</b> 1/10-1/50 <b>Immunofluorescence:</b> 1/10-1/50 Other applications not tested. Optimal dilutions are dependent on conditions and should be determined by the user.
<b>Specificity:</b>	This antibody detects 11-beta-HSD3 / HSD11B1L at C-term.
<b>Species Reactivity:</b>	<b>Tested:</b> Human
<b>Add. Information:</b>	<b>Molecular Weight:</b> 34288 Da
<b>Storage:</b>	Store the antibody undiluted at 2-8°C for one month or (in aliquots) at -20°C for longer. Avoid repeated freezing and thawing. Shelf life: one year from despatch.
<b>General Readings:</b>	Huang, C., et al. Acta Biochim. Pol. 56(2):279-289 (2009) Kissinger, C.R., et al. J. Mol. Biol. 342(3):943-952 (2004)

Pictures:

HSD11B1L Antibody (C-term) (Cat. #TA324404) western blot analysis in K562 cell line lysates (35ug/lane). This demonstrates the HSD11B1L antibody detected the HSD11B1L protein (arrow).



HSD11B1L Antibody (C-term) (Cat. #TA324404) immunohistochemistry analysis in formalin fixed and paraffin embedded human prostate carcinoma followed by peroxidase conjugation of the secondary antibody and DAB staining. This data demonstrates the use of HSD11B1L Antibody (C-term) for immunohistochemistry. Clinical relevance has not been evaluated.



Confocal immunofluorescent analysis of HSD11B1L Antibody (C-term) (Cat#TA324404) with U-251MG cell followed by Alexa Fluor 488-conjugated goat anti-rabbit IgG (green). DAPI was used to stain the cell nuclear (blue).

