

Polyclonal Antibody to Growth hormone receptor (N-term) - Aff - Purified

Alternate names:	GH receptor, GHR, Somatotropin receptor
Catalog No.:	AP23328PU-N
Quantity:	0.1 mg
Concentration:	0.5 mg/ml (after reconstitution)
Background:	<p>The GHR locus to human chromosome 5p13.1-p12 and to mouse chromosome 15.1. Additionally, its gene has 9 exons that encode the receptor and several additional exons in the 5-prime untranslated region. The coding exons span at least 87 kb. GHR consists of an extracellular domain of 246 amino acids, a single transmembrane domain, and a cytoplasmic domain. Exons 3 to 7 encode the extracellular domain. There are 2 isoforms of GHR in humans, generated by retention or exclusion of exon 3 during splicing: a full-length isoform and an isoform that lacks exon 3 (d3GHR). Furthermore, the two isoforms of GHR are expressed in the placenta and appeared to be due to alternative splicing. In cirrhosis, there is a state of acquired GH resistance, as defined by high circulating GH levels with low IGF1 levels. Moreover, Mutations in the GHR gene have been demonstrated as the cause of Laron syndrome, also known as the growth hormone insensitivity syndrome (GHIS).</p>
Uniprot ID:	P10912
NCBI:	NP_000154
GeneID:	2690
Host / Isotype:	Rabbit / IgG
Immunogen:	<p>Synthetic peptide corresponding to a sequence at the N-terminal of Human GHR (101-117 aa).</p> <p>Remarks: Sequence is different to the related rat sequence by a single amino acid.</p>
Format:	<p>State: Lyophilized purified IgG fraction Purification: Immunoaffinity Chromatography Buffer System: 0.9 mg NaCl, 0.2 mg Na₂HPO₄ Preservatives: 0.05 mg Thimerosal, 0.05 mg Sodium Azide Stabilizers: 5mg BSA Reconstitution: Resore with 0.2 ml of distilled water to a concentration of 0.5 mg/ml.</p>
Applications:	<p>Western blot: 0.1-0.5 µg/ml. Immunohistochemistry on Paraffin Sections: 0.5-0.1 µg/ml. Heat antigen retrieval is recommended. Other applications not tested. Optimal dilutions are dependent on conditions and should be determined by the user.</p>
Specificity:	This antibody detects Growth hormone receptor (N-term).

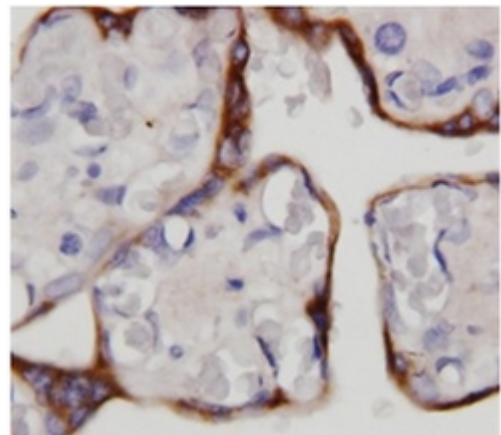
Species Reactivity: Tested: Human, Mouse, Rat.

Storage: Store the antibody undiluted at 2-8°C for one month or (in aliquots) at -20°C for longer. Avoid repeated freezing and thawing. Shelf life: one year from despatch.

General Readings:

1. Barton DE, Foellmer BE, Wood WI, Francke U. Chromosome mapping of the growth hormone receptor gene in man and mouse. *Cytogenet Cell Genet.* 1989;50(2-3):137-41. PubMed PMID: 2776481.
2. Godowski PJ, Leung DW, Meacham LR, Galgani JP, Hellmiss R, Keret R, et al. Characterization of the human growth hormone receptor gene and demonstration of a partial gene deletion in two patients with Laron-type dwarfism. *Proc Natl Acad Sci U S A.* 1989 Oct;86(20):8083-7. PubMed PMID: 2813379.
3. Amselem S, Sobrier ML, Duquesnoy P, Rappaport R, Postel-Vinay MC, Gournelen M, et al. Recurrent nonsense mutations in the growth hormone receptor from patients with Laron dwarfism. *J Clin Invest.* 1991 Mar;87(3):1098-102. PubMed PMID: 1999489.

Pictures: Immunohistochemical staining of Human placenta



GHR Polyclonal Antibody

