

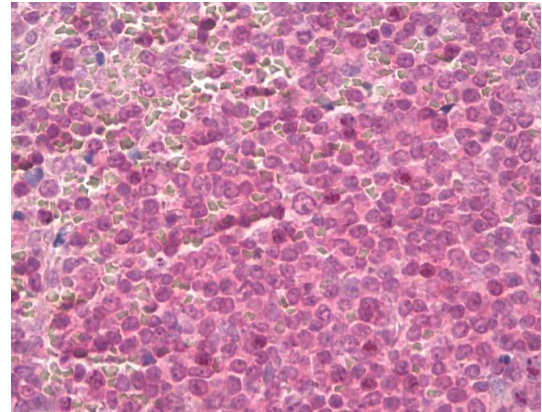
## Polyclonal Antibody to 14-3-3 protein zeta/delta (200-245) - Purified

<b>Alternate names:</b>	KCIP-1, Protein kinase C inhibitor protein 1, YWHAZ
<b>Catalog No.:</b>	AP21527PU-N
<b>Quantity:</b>	0.1 mg
<b>Concentration:</b>	0.5 mg/ml
<b>Background:</b>	14-3-3 zeta is a 245 amino acid containing protein belonging to the 14-3-3 family mediating signal transduction by binding to phosphoserine containing proteins. It is a highly conserved protein in both plants and mammals. The encoded protein interacts with IRS1 implicating a plausible role in regulating insulin sensitivity. There are several transcript variants, with seven known mammalian isoforms: alpha, beta, gamma, delta, epsilon, zeta and eta. 14-3-3 proteins function in broad regulation of proteins by cytoplasmic sequestration, occupation of interaction domains and import/export sequences, prevention of degradation, and activation/repression of enzyme activity. The protein is highly abundant in brain.
<b>Uniprot ID:</b>	<a href="#">P63104</a>
<b>NCBI:</b>	<a href="#">NP_001129171.1</a>
<b>GeneID:</b>	<a href="#">7534</a>
<b>Host:</b>	Rabbit
<b>Immunogen:</b>	Amino acids 200-245 of human 14-3-3 zeta <b>Remarks:</b> 100% homologous in human, cattle, rat, mouse, chimpanzee, rhesus monkey, opossum, pig, chicken and dog 94% homologous in frog
<b>Format:</b>	<b>State:</b> Liquid purified Ig fraction <b>Purification:</b> Protein A chromatography <b>Buffer System:</b> PBS <b>Preservatives:</b> 0.05% sodium azide <b>Stabilizers:</b> 0.05% BSA
<b>Applications:</b>	<b>Immunohistochemistry o paraffin sections:</b> 10 µg/ml. <b>Western blot:</b> 1 - 3 µg/ml. <i>Recommended Positive Control:</i> Brain Other applications not tested. Optimal dilutions are dependent on conditions and should be determined by the user.
<b>Specificity:</b>	This antibody reacts to 14-3-3 zeta.
<b>Species Reactivity:</b>	<b>Tested:</b> Chimpanzee, Cow, Dog, Human, Mouse, Rat, Rhesus Monkey. <b>Expected from sequence similarity:</b> Frog.

**Storage:** Store the antibody undiluted at 2-8°C for one month or (in aliquots) at -20°C for longer. Avoid repeated freezing and thawing. Shelf life: one year from despatch.

**General Readings:** 1. Murthi, P. et al. Placenta 29:798-801 (2008).  
2. Frasor, J. et al. Cancer Res. 66:7334-7340 (2006).  
3. Heidenblad, M. et al. BMC Med. Genomics 31:3 (2008).

**Pictures:** Formalin-fixed, paraffin-embedded human spleen stained with 14-3-3 zeta antibody (Cat.-No.: AP21527PU-N) at 10 µg/ml. Staining of formalin-fixed tissues is enhanced by boiling tissue sections in 10 mM sodium citrate buffer, pH 6.0 for 10-20 min followed by cooling at RT for 20 min.



Western blot analysis of 14-3-3 zeta in human brain lysate in the 1) absence, 2) presence of immunizing peptide, 3) mouse brain lysate and 4) rat brain lysate in the absence of immunizing peptide using AP21527PU-N at 2 µg/ml. Goat anti-rabbit Ig HRP secondary antibody and PicoTect ECL substrate solution were used for this test.

