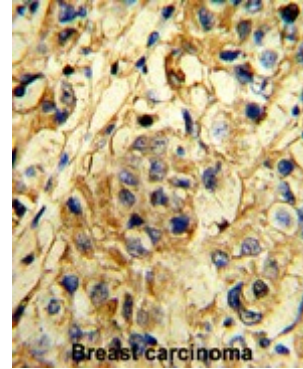


AP17789PU-N**Polyclonal Antibody to TIMP1 (N-term)**

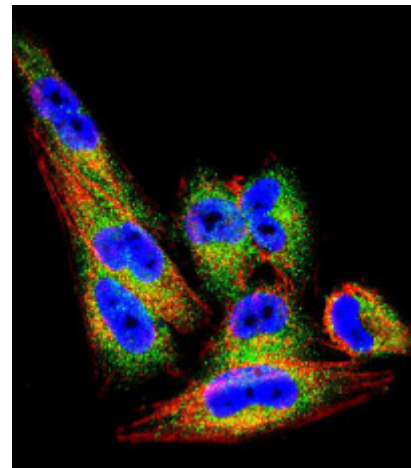
| | |
|--------------------------|--|
| Alternate names: | CLGI, EPA, Erythroid-potentiating activity, Fibroblast collagenase inhibitor, Metalloproteinase inhibitor 1, TIMP, TIMP-1, Tissue inhibitor of metalloproteinases |
| Quantity: | 0.4 ml |
| Concentration: | 2.0 mg/ml (Lot specific) |
| Background: | TIMP1 belongs to the TIMP family. The proteins in this family are natural inhibitors of the matrix metalloproteinases (MMPs), a group of peptidases involved in degradation of the extracellular matrix. In addition to its inhibitory role against most of the known MMPs, the protein is able to promote cell proliferation in a wide range of cell types, and may also have an anti-apoptotic function. |
| Uniprot ID: | P01033 |
| NCBI: | NP_003245.1 |
| GeneID: | 7076 |
| Host: | Rabbit |
| Immunogen: | KLH conjugated synthetic peptide between 41-70 amino acids from the N-terminal region of Human TIMP1. |
| Format: | State: Liquid purified Ig fraction Purification: Saturated Ammonium Sulfate (SAS) precipitation Buffer System: PBS Preservatives: 0.09% (W/V) Sodium Azide |
| Applications: | Western blotting: 1/1,000. Immunofluorescence: 1/10-1/50. Immunohistochemistry on Paraffin Sections: 1/10-1/50. Flow Cytometry: 1/10 - 1/50. Other applications not tested. Optimal dilutions are dependent on conditions and should be determined by the user. |
| Specificity: | This antibody recognizes Human TIMP1. Other species not tested. |
| Storage: | Store undiluted at 2-8°C for one month or (in aliquots) at -20°C for longer. Avoid repeated freezing and thawing. Shelf life: one year from despatch. |
| General Readings: | 1. Safranek, J., <i>Anticancer Res.</i> 29 (7), 2513-2517 (2009) 2. Onal, I.K., <i>Eur. J. Intern. Med.</i> 20 (4), 369-372 (2009) 3. Okamura, H., <i>Int. J. Oncol.</i> 35 (1), 181-186 (2009) |

Pictures:

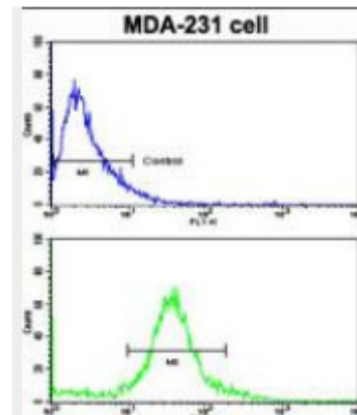
Formalin-fixed and paraffin-embedded human breast carcinoma reacted with TIMP1 Antibody (N-term), which was peroxidase-conjugated to the secondary antibody, followed by DAB staining. This data demonstrates the use of this antibody for immunohistochemistry; clinical relevance has not been evaluated.



Confocal immunofluorescent analysis of Cat. No. AP17789PU-N TIMP1 antibody (N-term) with A2058 cell followed by Alexa Fluor 488-conjugated goat anti-rabbit IgG (green). Actin filaments have been labeled with Alexa Fluor 555 phalloidin (red). DAPI was used to stain the cell nuclear (blue).



Flow cytometric analysis of MDA-231 cells using Cat. No. AP17789PU-N TIMP1 antibody (N-term)(bottom histogram) compared to a negative control cell (top histogram). FITC-conjugated goat-anti-rabbit secondary antibodies were used for the analysis.



Western blot analysis of TIMP1 Antibody (N-term) (AP17789PU-N) in CEM cell line lysates (35ug/lane). TIMP1 (arrow) was detected using the purified Pab.

