

**AP16443PU-N****Polyclonal Antibody to 14-3-3 protein sigma / SFN - Aff - Purified****Alternate names:**

Epithelial cell marker protein 1, HME1, Stratifin

**Quantity:**

0.1 mg

**Concentration:**

0.5 mg/ml

**Background:**

Members of the 14-3-3 family of proteins are highly conserved proteins, localized in neurons, and are axonally transported to the nerve terminals. They are also present, at lower levels, in various other eukaryotic tissues. 14-3-3 proteins appear to play important roles in a variety of signal transduction pathways, including those involved in cell cycle regulation and cell survival. As 14-3-3 proteins bind to specific phosphoserine-containing sequences they are likely to have an important role in signaling pathways mediated by serine/threonine protein kinases. 14-3-3 sigma may be required for Raf-1 kinase activity and phosphorylation, among many other functions.

**Uniprot ID:**[P31947](#)**NCBI:**[9606](#)**GenelD:**[2810](#)**Host:**

Goat

**Immunogen:**

Peptide with sequence from the internal region of the protein sequence according to NP\_006133.1.

**Genename:** SFN**AA Sequence:**

C-DLHTLSEDSYKDST

**Format:****State:** Liquid purified Ig fraction.**Purification:** Ammonium Sulphate Precipitation followed by Antigen Affinity Chromatography using the immunizing peptide.**Buffer System:** Tris saline, pH 7.3 containing 0.02% Sodium Azide as preservative and 0.5% BSA as stabilizer.**Applications:****Peptide ELISA:** 1/16000 (Detection Limit).**Western Blot:** 0.03-0.1 µg/ml. Approx. 28kDa band observed in Human Skin lysates (calculated MW of 27.8kDa according to NP\_006133.1).**Immunohistochemistry on Paraffin Sections:** 2-3 µg/ml.

In paraffin embedded Human Skin, this antibody shows strong nuclear staining in selected cells of the basal layer. Data obtained from a previous batch (different goat). Other applications not tested. Optimal dilutions are dependent on conditions and should be determined by the user.

**Specificity:**

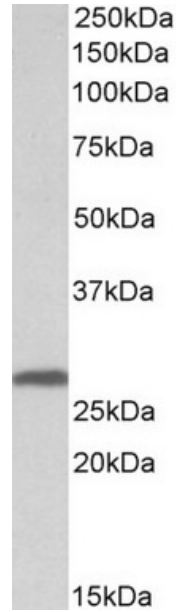
This antibody recognizes 4-3-3 sigma/Stratifin.

**Species Reactivity:****Tested:** Human.**Expected from sequence similarity:** Mouse, Rat, Canine (Dog) and Porcine.

**Storage:** Store undiluted at 2-8°C for one month or (in aliquots) at -20°C for longer. Avoid repeated freezing and thawing. Shelf life: one year from despatch.

**General Readings:** 1. Lodygin D, Hermeking H. The role of epigenetic inactivation of 14-3-3sigma in human cancer. *Cell Res.* 2005 Apr;15(4):237-46. PubMed PMID: 15857578.

**Pictures:** TA302401 (0.03 ug/ml) staining of Human Skin lysate (35 ug protein in RIPA buffer). Primary incubation was 1 hour. Detected by chemiluminescence.



TA302401 (2 ug/ml) staining of paraffin embedded Human Skin. Steamed antigen retrieval with Tris/EDTA buffer pH 9, HRP-staining.

