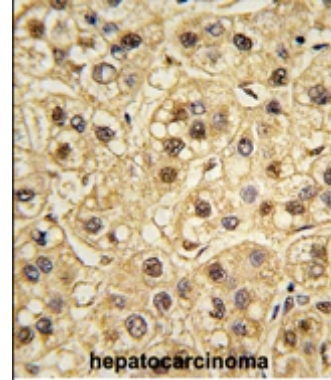


AP15151PU-N**Polyclonal Antibody to 14-3-3 protein zeta/delta - Aff - Purified**

Alternate names:	KCIP-1, Protein kinase C inhibitor protein 1, YWHAZ
Quantity:	0.4 ml
Concentration:	lot specific
Background:	14-3-3 protein zeta/delta belongs to the 14-3-3 family of proteins which mediate signal transduction by binding to phosphoserine-containing proteins. This protein interacts with IRS1 protein, suggesting a role in regulating insulin sensitivity. This highly conserved protein family is found in both plants and mammals, and this protein is 99% identical to the mouse, rat and sheep orthologs.
Uniprot ID:	P63104
NCBI:	9606
GeneID:	7534
Host / Isotype:	Rabbit / Ig
Immunogen:	This antibody is generated from rabbits immunized with a KLH conjugated synthetic peptide corresponding to amino acid residues surrounding T232 of human 14-3-3.
Format:	State: Liquid purified Ig Purification: Protein A column, followed by peptide affinity purification Buffer System: PBS with 0.09% (W/V) sodium azide
Applications:	ELISA: 1/1,000. Western blotting: 1/50 - 1/100. Immunohistochemistry: 1/10 - 1/50. Other applications not tested. Optimal dilutions are dependent on conditions and should be determined by the user.
Specificity:	This antibody reacts to 14-3-3 protein zeta/delta. Species: Human. Other species not tested.
Storage:	Store the antibody undiluted at 2-8°C for one month or (in aliquots) at -20°C for longer. Avoid repeated freezing and thawing. Shelf life: one year from despatch.
Caution:	This product is for research use only. Not for use in diagnostic or therapeutic procedures.
General Readings:	1. Li,F.Q., J. Cell Biol. 181 (7), 1141-1154 (2008) 2. Mateo,I., Eur. J. Neurol. 15 (3), 219-222 (2008) 3. Li,Z., Proc. Natl. Acad. Sci. U.S.A. 105 (1), 162-167 (2008) 4. Powell,D.W., Mol. Cell. Biol. 23 (15), 5376-5387 (2003) 5. Powell,D.W., J. Biol. Chem. 277 (24), 21639-21642 (2002)

Pictures:

Formalin-fixed and paraffin-embedded human testis tissue reacted with PLD1 antibody (N-term) which was peroxidase-conjugated to the secondary antibody, followed by DAB staining.



Western blot analysis of anti-14-3-3 protein zeta/delta Antibody (T232) in A375 cell line lysates (35ug/lane). 14-3-3 (arrow) was detected using the purified Pab (1:60dilution).

