

AP13171PU-N**Polyclonal Antibody to MMP-14 / MT1-MMP (N-term) - Purified**

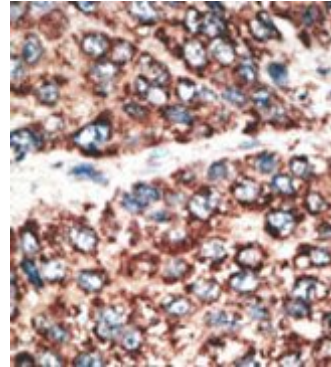
Alternate names:	MMP-X1, MMP14, Matrix metalloproteinase-14, Membrane-type-1 matrix metalloproteinase
Quantity:	0.4 ml
Concentration:	lot specific
Background:	Proteins of the matrix metalloproteinase (MMP) family are involved in the breakdown of extracellular matrix in normal physiological processes, such as embryonic development, reproduction, and tissue remodeling, as well as in disease processes, such as arthritis and metastasis. Most MMPs are secreted as inactive proproteins which are activated when cleaved by extracellular proteinases. MMP14 seems to specifically activate progelatinase A, and may thus trigger invasion by tumor cells by activating progelatinase A on the tumor cell surface. Expression is significant in stromal cells of colon, breast, and head and neck.
Uniprot ID:	P50281
NCBI:	9606
GeneID:	4323
Host / Isotype:	Rabbit / Ig
Immunogen:	This antibody is generated from rabbits immunized with a KLH conjugated synthetic peptide selected from the N-terminal region of human MMP14.
Format:	State: Liquid purified Ig Purification: Protein G column, eluted with high and low pH buffers and neutralized immediately, followed by dialysis against PBS Buffer System: PBS with 0.09% (W/V) sodium azide
Applications:	ELISA: 1/1,000. Western blotting: 1/100 - 1/500. Immunohistochemistry: 1/50 - 1/100. Other applications not tested. Optimal dilutions are dependent on conditions and should be determined by the user.
Specificity:	This antibody reacts to MMP14. Species: Human. Other species not tested.
Storage:	Store the antibody undiluted at 2-8°C for one month or (in aliquots) at -20°C for longer. Avoid repeated freezing and thawing. Shelf life: one year from despatch.
Caution:	This product is for research use only. Not for use in diagnostic or therapeutic procedures.

General Readings:

1. Will, H., et al., Eur. J. Biochem. 231(3):602-608 (1995).
2. Takino, T., et al., Gene 155(2):293-298 (1995).
3. Okada, A., et al., Proc. Natl. Acad. Sci. U.S.A. 92(7):2730-2734 (1995).
4. Sato, H., et al., Nature 370(6484):61-65 (1994).

Pictures:

Formalin-fixed and paraffin-embedded human cancer tissue reacted with the primary antibody, which was peroxidase-conjugated to the secondary antibody, followed by DAB staining.



(LEFT)The anti-MMP14 N-term Antibody is used in Western blot to detect MMP14 in A375 lysate. (RIGHT)Western blot analysis of MMP14 (arrow) using rabbit polyclonal MMP14 Antibody (N-term). 293 cell lysates (2 ug/lane) either nontransfected (Lane 1) or transiently transfected with the MMP14 gene (Lane 2)

