

Polyclonal Antibody to HSP60 - Purified

Alternate names:	60 kDa chaperonin, 60 kDa heat shock protein mitochondrial, CPN60, Chaperonin 60, GROEL, GroEL Homolog, HSP-60, HSPD1, Heat shock protein 60, HuCHA60, Mitochondrial matrix protein P1, P60 lymphocyte protein
Catalog No.:	AP12523PU-N
Quantity:	0.4 ml
Concentration:	2.0 mg/mL
Background:	HSPD1 is a member of the chaperonin family. This protein may function as a signaling molecule in the innate immune system. The protein is essential for the folding and assembly of newly imported proteins in the mitochondria. The protein is adjacent to a related family member and the region between the 2 genes functions as a bidirectional promoter.
Uniprot ID:	P10809
NCBI:	9606
GeneID:	3329
Host / Isotype:	Rabbit / Ig
Immunogen:	This antibody is generated from rabbits immunized with a KLH conjugated synthetic peptide selected from the Center region of human HSPD1.
Format:	State: Liquid purified Ig fraction. Purification: Saturated Ammonium Sulfate (SAS) precipitation followed by dialysis against PBS. Buffer System: PBS with 0.09% (W/V) Sodium Azide as preservative.
Applications:	ELISA: 1/1,000. Western Blot: 1/50-1/100. Other applications not tested. Optimal dilutions are dependent on conditions and should be determined by the user.
Specificity:	This antibody detects HSPD1 (Center). Species: Human Other species not tested.
Add. Information:	Molecular weight: 61055 Da
Storage:	Store the antibody undiluted at 2-8°C for one month or (in aliquots) at -20°C for longer. Avoid repeated freezing and thawing. Shelf life: one year from despatch.
Caution:	This product is for research use only. Not for use in diagnostic or therapeutic procedures.
General Readings:	1. Venner T.J., Singh B., Gupta R.S. DNA Cell Biol. 9:545-552(1990) 2. Hansen J.J., Bross P., Westergaard M., Nielsen M.N., Eiberg H., Hum. Genet.

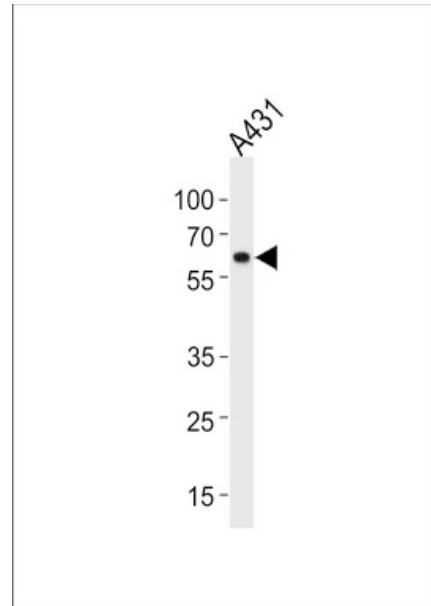
112:71-77(2003)

3. Rasmussen R.K., Ji H., Eddes J.S., Moritz R.L., Electrophoresis 18:588-598(1997)

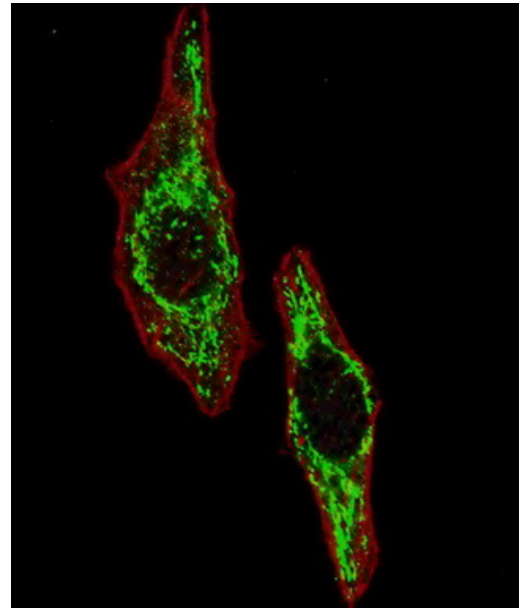
4. Aboulaich N., Vainonen J.P., Stralfors P., Vener A.V. Biochem. J. 383:237-248(2004)

Pictures:

HSPD1 Antibody (Center) (Cat. #TA324748) western blot analysis in A431 cell line lysates (35ug/lane). This demonstrates the HSPD1 antibody detected the HSPD1 protein (arrow).



IF image of U251 cells stained with HSPD1 (Center) antibody. U251 cells were incubated with AP2859C HSPD1 (Center) primary antibody (1:100, 2 h at RT). For secondary antibody, Alexa Fluor® 488 conjugated donkey anti-rabbit antibody (green) was used (1:1000, 1h). Cytoplasmic actin was counterstained with Alexa Fluor® 555 (red) conjugated Phalloidin. Pictures were taken on a Biorevo microscope (BZ-900, Keyence). Note the highly specific localization of the HSPD1 mainly to the mitochondria.



IF image of HeLa cell stained with HSPD1 Antibody (Center)(Cat#TA324748). HeLa cells were incubated with HSPD1 primary antibody (1:25, 1 h at 37?). For secondary antibody, Alexa Fluor® 488 conjugated donkey anti-rabbit antibody (green) was used (1:400). Cytoplasmic actin was counterstained with Alexa Fluor® 555 (red) conjugated Phalloidin (7 units/ml). Nuclei were counterstained with DAPI (blue) . HSPD1 immunoreactivity is localized to Mitochondria significantly.

