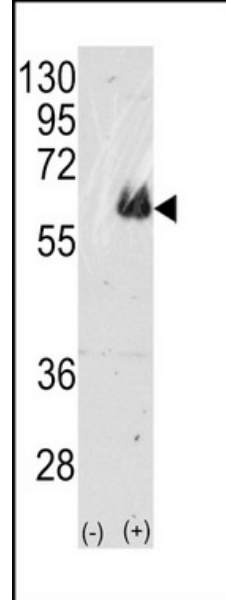


Polyclonal Antibody to MAPT / TAU (C-term) - Purified

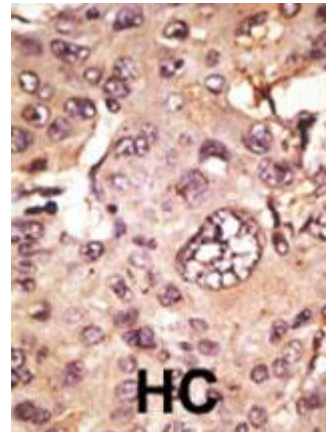
Alternate names:	MAPTL, MTBT1, Microtubule-associated protein tau, Neurofibrillary tangle protein, PHF-tau, Paired helical filament-tau
Catalog No.:	AP11906PU-N
Quantity:	0.4 ml
Concentration:	lot specific
Background:	The microtubule-associated protein tau (MAPT) gene transcript undergoes complex, regulated alternative splicing, giving rise to several mRNA species. MAPT transcripts are differentially expressed in the nervous system, depending on stage of neuronal maturation and neuron type. MAPT gene mutations result in several neurodegenerative disorders such as Alzheimer's disease, Pick's disease, frontotemporal dementia, cortico-basal degeneration and progressive supranuclear palsy.
Uniprot ID:	P10636
NCBI:	9606
GeneID:	4137
Host / Isotype:	Rabbit / Ig
Immunogen:	This antibody is generated from rabbits immunized with a KLH conjugated synthetic peptide selected from the C-terminal region of human TAU. Remarks: The sequence of the immunogen is 100 % homologous to mouse.
Format:	State: Liquid Ig fraction Purification: Protein G column, eluted with high and low pH buffers and neutralized immediately, followed by dialysis against PBS Buffer System: PBS with 0.09% (W/V) sodium azide
Applications:	ELISA 1:1,000. Western blot 1:50 - 1:100. Immunohistochemistry on paraffin sections 1:50 - 1:100. Other applications not tested. Optimal dilutions are dependent on conditions and should be determined by the user.
Specificity:	This antibody detects TAU at C-term. Species: Human, Mouse. Other species not tested.
Add. Information:	Molecular weight: 78746 Da
Storage:	Store the antibody at 2 - 8 °C up to one month or (in aliquots) at -20 °C for longer. Avoid repeated freezing and thawing. Shelf life: one year from despatch.

- General Readings:**
1. Yoshiyama, Y., et al., J. Neurosci. 23(33):10662-10671 (2003).
 2. Horiguchi, T., et al., Am. J. Pathol. 163(3):1021-1031 (2003).
 3. Gamblin, T.C., et al., Proc. Natl. Acad. Sci. U.S.A. 100(17):10032-10037 (2003).
 4. Kraemer, B.C., et al., Proc. Natl. Acad. Sci. U.S.A. 100(17):9980-9985 (2003).
 5. Yancopoulou, D., et al., J. Neuropathol. Exp. Neurol. 62(8):878-882 (2003).

Pictures: Western blot analysis of TAU (arrow) using rabbit polyclonal TAU Antibody



Formalin-fixed and paraffin-embedded human cancer tissue reacted with the primary antibody, which was peroxidase-conjugated to the secondary antibody, followed by AEC staining. This data demonstrates the use of this antibody for immunohistochemistry; clinical relevance has not been evaluated. BC = breast carcinoma; HC = hepatocarcinoma.



Confocal immunofluorescent analysis of TAU Antibody (C-term)(Cat#TA324703) with MCF-7 cell followed by Alexa Fluor 488-conjugated goat anti-rabbit IgG (green). DAPI was used to stain the cell nuclear (blue).

