

Polyclonal Antibody to Cytokeratin 17 (C-term) - Aff - Purified

Alternate names:	CK17, Cytokeratin-17, K17, KRT17, Keratin 17, Keratin type I cytoskeletal 17, Keratin-17
Catalog No.:	AP09591PU-N
Quantity:	1 ml
Background:	Keratin 17 plays a role in the formation and maintenance of various skin appendages, specifically in determining shape and orientation of hair. It may be a marker of basal cell differentiation in complex epithelia and therefore indicative of a certain type of epithelial "stem cells." It also acts as an autoantigen in the immunopathogenesis of psoriasis, with certain peptide regions being a major target for autoreactive T-cells and hence causing their proliferation. It is required for the correct growth of hair follicles, in particular for the persistence of the anagen (growth) state and modulates the function of TNF-alpha in the specific context of hair cycling. It regulates protein synthesis and epithelial cell growth through binding to the adapter protein SFN and by stimulating Akt/mTOR pathway and is involved in tissue repair. Keratin 17 is expressed in the outer root sheath and medulla region of hair follicle specifically from eyebrow and beard, digital pulp, nail matrix and nail bed epithelium, mucosal stratified squamous epithelia and in basal cells of oral epithelium, palmoplantar epidermis and sweat and mammary glands. It is also expressed in myoepithelium of prostate, basal layer of urinary bladder, cambial cells of sebaceous gland and in exocervix (at protein level).
Uniprot ID:	Q04695
NCBI:	NP_000413
GeneID:	3872
Host / Isotype:	Rabbit / IgG
Immunogen:	A synthetic peptide derived from C-terminus of Human keratin 17 protein. Remarks: Epitope: C-terminus
Format:	State: Liquid purified IgG fraction. Purification: Affinity Chromatography. Buffer System: 10mM PBS, pH 7.4 with BSA as stabilizer and 0.09% Sodium Azide as preservative.
Applications:	Western Blot: 1/25 for 1 hour at RT. Immunohistochemistry with Formalin-Fixed, Paraffin-Embedded tissues: 1/200. Staining of formalin-fixed tissues requires boiling tissue sections in 1mM EDTA, pH 8.0 for 10 min followed by cooling at RT for 20 min. Incubation Time: 30 minutes at RT. Positive Control: Lung adenocarcinoma and prostate carcinoma.

Other applications not tested. Optimal dilutions are dependent on conditions and should be determined by the user.

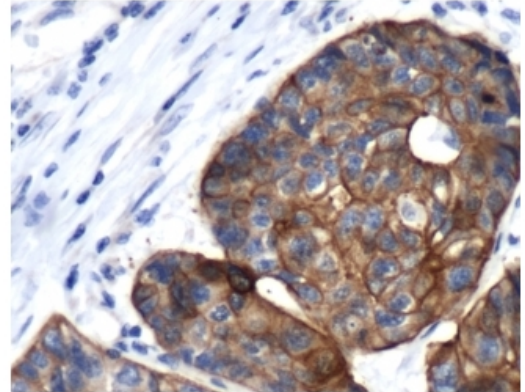
Specificity: This antibody recognizes Cytokeratin-17 .
Cellular Localization: Cytoplasm.

Species Reactivity: **Tested:** Human.

Add. Information: **Molecular Weight:** 47 kDa.

Storage: Store the antibody undiluted at 2-8°C.
DO NOT FREEZE!
Shelf life: one year from despatch.

Pictures: AP09591PU Cytokeratin-17 antibody staining of Human Lung Adenocarcinoma.



AP09591PU Cytokeratin-17 antibody staining of HeLa cell lysate by Western Blot.

