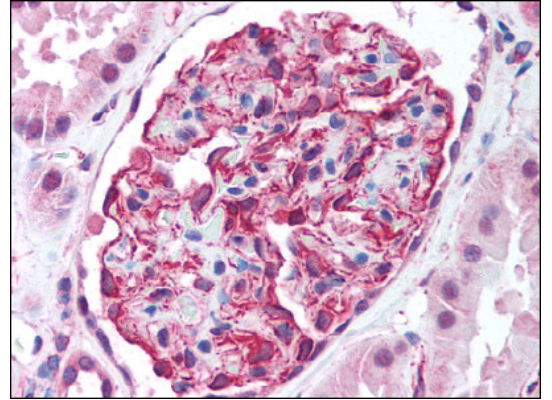


AP07130PU-N**Polyclonal Antibody to AKT2 / PKB beta - Purified**

Alternate names:	Protein kinase Akt-2, Protein kinase B beta, RAC-PK-beta, RAC-beta serine/threonine-protein kinase
Quantity:	50 µg
Concentration:	0.2 mg/ml
Background:	AKT2 encodes a RAC/AKT-type protein kinase that contains a N-terminal pleckstrin-homology (PH) domain and a central catalytic domain closely related to both cAMP-dependent protein kinase and protein kinase C. The protein is a member of PI3K-mediated signalling pathways associated with the regulation of proliferation, survival, protein synthesis, and metabolism. It is activated by a variety of growth factors. AKT2 has been shown to be transcriptionally regulated by MyoD and to activate MyoD-myocyte enhancer binding factor-2 (MEF2) transactivation activity during muscle differentiation. Glycogen synthase kinase 3 (GSK-3) also has been shown to be a downstream target of AKT2. The AKT2 gene is one of the human homologues of v-akt, the transduced oncogene of the AKT8 virus, which induces lymphomas in mice. It has been implicated in breast, ovarian, and pancreatic cancers.
Uniprot ID:	P31751
NCBI:	NP_001617.1
GeneID:	208
Host:	Rabbit
Immunogen:	Synthetic peptide corresponding to the C-terminus of human AKT2
Format:	State: Liquid purified Ig fraction Buffer System: PBS containing 0.05% sodium azide
Applications:	Immunohistochemistry on Paraffin Sections: 10 µg/ml. Immunoprecipitation. Western Blot. Other applications not tested. Optimal dilutions are dependent on conditions and should be determined by the user.
Specificity:	This antibody detects AKT2 at C-terminus. Species: Human, Mouse, Rat. Other species not tested.
Storage:	Store undiluted at 2-8 °C. Shelf life: one year from despatch.

Pictures:

Kidney: Formalin-Fixed Paraffin-Embedded (FFPE)



Breast: Formalin-Fixed Paraffin-Embedded (FFPE)

