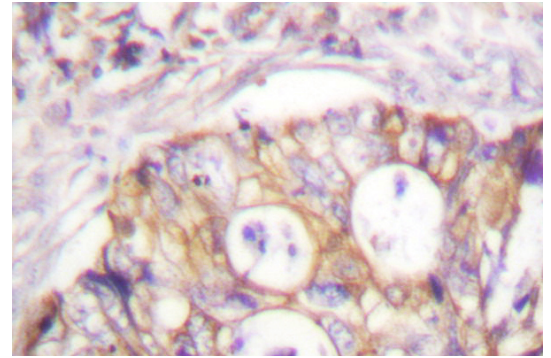


AP06531PU-N**Polyclonal Antibody to Cytokeratin 8 - Aff - Purified**

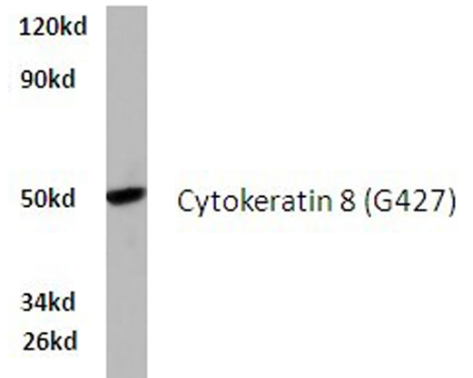
Alternate names:	CK8, CYK8, Cytokeratin endo A, Cytokeratin-8, K8, KRT8, Keratin, Keratin-8, type II cytoskeletal 8
Quantity:	0.1 mg
Concentration:	1.0 mg/ml
Background:	Cytokeratins comprise a diverse group of intermediate filament proteins (IFPs) that are expressed as pairs in both keratinized and non-keratinized epithelial tissue. Cytokeratins play a critical role in differentiation and tissue specialization and function to maintain the overall structural integrity of epithelial cells. Cytokeratins have been found to be useful markers of tissue differentiation which is directly applicable to the characterization of malignant tumors. Cytokeratin 5 is expressed in normal basal cells. Mutations of the Cytokeratin 5 gene (KRT5) have been shown to result in the autosomal dominant disorder epidermolysis bullosa (EB).
Uniprot ID:	P05787
NCBI:	NP_002264.1
GeneID:	3856
Host:	Rabbit
Immunogen:	Synthetic peptide, corresponding to amino acids 401-450 of Human Cytokeratin 8.
Format:	State: Liquid purified Ig fraction Purification: Affinity-chromatography using epitope-specific immunogen and the purity is > 95% (by SDS-PAGE) Buffer System: Phosphate buffered saline (PBS), pH 7.2. Preservatives: 15 mM sodium azide
Applications:	Western blot: 1/500-1/1000. Immunohistochemistry on paraffin sections: 1/50-1/200. Immunofluorescence: 1/50-1/200. Other applications not tested. Optimal dilutions are dependent on conditions and should be determined by the user.
Molecular Weight:	~ 55 kDa
Specificity:	This antibody detects endogenous levels of K8 protein. (region surrounding Gly427)
Species Reactivity:	Tested: Human. Expected from sequence similarity: Mouse and Rat.
Storage:	Store undiluted at 2-8°C for one month or (in aliquots) at -20°C for longer. Avoid repeated freezing and thawing. Shelf life: one year from despatch.

Pictures:

Immunohistochemistry (IHC) analyzes of K8 antibody (Cat.-No.: AP06531PU-N) in paraffin-embedded human colon carcinomatissue.



Western blot (WB) analysis of K8 antibody (Cat.-No.: AP06531PU-N) in extracts from hela cells.



Hela whole cell lysate
Cytokeratin 8 (G427) pAb at 1:500 dilution