

**AP06229PU-N****Polyclonal Antibody to MMP-16 - Aff - Purified****Alternate names:**

MMP-X2, MMP16, MMPX2, Matrix metalloproteinase-16, Membrane-type-3 matrix metalloproteinase

**Quantity:**

0.1 mg

**Concentration:**

1.0 mg/ml

**Background:**

The matrix metalloproteinases (MMP) are a family of peptidase enzymes responsible for the degradation of extracellular matrix components, including collagen, gelatin, fibronectin, laminin and proteoglycan. Transcription of MMP genes is differentially activated by phorbol ester, lipopolysaccharide (LPS) or staphylococcal enterotoxin B (SEB). MMP catalysis requires both calcium and zinc. MMP-13 (also designated collagenase-3) is produced by breast carcinomas and degrades collagen types I, II and III. MMP-13 has wide substrate specificity, and its physiologic expression is limited to situations in which rapid and effective remodeling of collagenous ECM takes place, such as fetal bone development and adult bone remodeling.

**Uniprot ID:**[P51512](#)**NCBI:**[NP\\_005932.2](#)**GeneID:**[4325](#)**Host:**

Rabbit

**Immunogen:**

Synthetic peptide, corresponding to amino acids 550-600 of Human MMP-16.

**Format:****State:** Liquid purified Ig fraction**Purification:** Affinity-chromatography using epitope-specific immunogen and the purity is > 95% (by SDS-PAGE)**Applications:****Western blot:** 1/500-1/1000.**Immunohistochemistry on paraffin sections:** 1/50-1/200.

Other applications not tested. Optimal dilutions are dependent on conditions and should be determined by the user.

**Molecular Weight:**

~ 68 kDa

**Specificity:**This antibody detects endogenous levels of MMP-16 protein.  
(region surrounding Thr583)**Species Reactivity:****Tested:** Human.**Expected from sequence similarity:** Mouse and Rat.**Storage:**

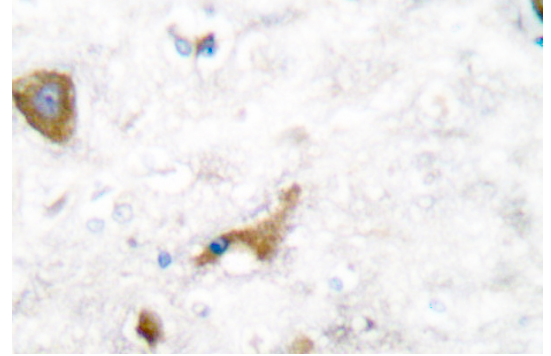
Store undiluted at 2-8°C for one month or (in aliquots) at -20°C for longer.

Avoid repeated freezing and thawing.

Shelf life: one year from despatch.

**Pictures:**

**Immunohistochemistry (IHC)** analyzes of MMP-16 antibody (Cat.-No.: AP06229PU-N) in paraffin-embedded human brain tissue.



**Western blot (WB)** analysis of MMP-16 antibody (Cat.-No.: AP06229PU-N) in extracts from raw264.7 cells.



Raw264.7 whole cell lysate  
MT-MMP-3(T583) pAb at 1:500 dilution