

**AP06197PU-N****Polyclonal Antibody to Cytokeratin 16 - Aff - Purified****Alternate names:**

CK16, Cytokeratin-16, K16, KRT16, KRT16A, Keratin 16, Keratin type I cytoskeletal 16, Keratin-16

**Quantity:**

0.1 mg

**Concentration:**

1.0 mg/ml

**Background:**

Keratin 16 is expressed in keratinocytes, which are undergoing rapid turnover in the suprabasal region (also known as hyperproliferation-related keratins). Keratin 16 is absent in normal breast tissue and in noninvasive breast carcinomas. Only 10% of the invasive breast carcinomas show diffuse or focal positivity. Reportedly, a relatively high concordance was found between the carcinomas immunostaining with the basal cell and the hyperproliferation-related keratins, but not between these markers and the proliferation marker Ki-67. This supports the conclusion that basal cells in breast cancer may show extensive proliferation, and that absence of Ki-67 staining does not mean that (tumor) cells are not proliferating.

Two cytokeratins, 6 and 16, are expressed when keratinocytes are undergoing rapid turnover in various pathological states, wound healing, psoriasis and some carcinomas

**Uniprot ID:**[P08779](#)**NCBI:**[NP\\_005548.2](#)**GeneID:**[3868](#)**Host:**

Rabbit

**Immunogen:**

Synthetic peptide, corresponding to amino acids 421-470 of Human Cytokeratin 16.

**Format:****State:** Liquid purified Ig fraction (> 95% pure by SDS-PAGE)**Purification:** Affinity Chromatography using epitope-specific immunogen**Buffer System:** Phosphate buffered saline (PBS), pH 7.2**Preservatives:** 0.02% Sodium Azide**Stabilizers:** 50 % Glycerol**Applications:****Western blot:** 1/500-1/1000.**Immunohistochemistry on Paraffin Sections:** 1/50-1/200.

Other applications not tested. Optimal dilutions are dependent on conditions and should be determined by the user.

**Molecular Weight:**

~52 kDa

**Specificity:**This antibody detects endogenous levels of Cytokeratin 16 protein.  
(region surroundign Ser451)**Species:** Human, Mouse, Rat.

Other species not tested.

**Storage:**

Store undiluted at 2-8°C for one month or (in aliquots) at -20°C for longer.

Avoid repeated freezing and thawing.

Shelf life: One year from despatch.

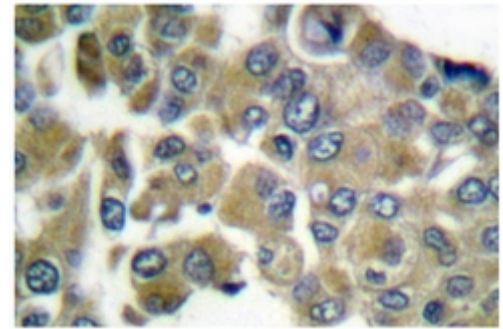
**Product Citations:**

**Originator or purchased from resellers:**

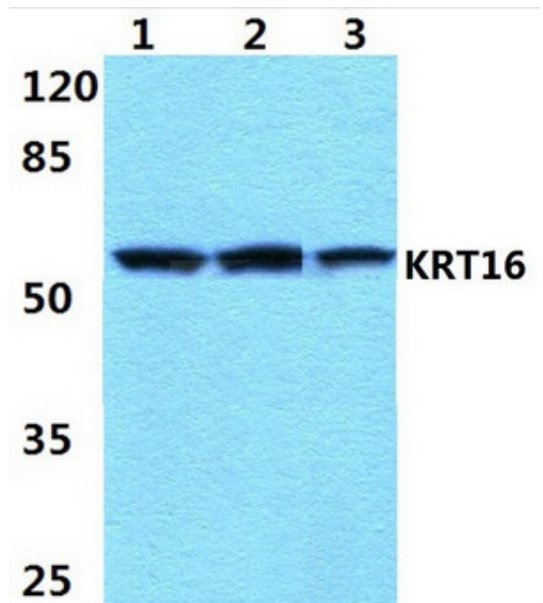
1. Li J, Yan M, Wang Z, Jing S, Li Y, Liu G, et al. Effects of canonical NF-κB signaling pathway on the proliferation and odonto/osteogenic differentiation of human stem cells from apical papilla. *Biomed Res Int.* 2014;2014:319651. doi: 10.1155/2014/319651. Epub 2014 Apr 23. PubMed PMID: 24864235.
2. Zhang Z, Han Y, Song J, Luo R, Jin X, Mu D, et al. Interferon-γ regulates the function of mesenchymal stem cells from oral lichen planus via indoleamine 2,3-dioxygenase activity. *J Oral Pathol Med.* 2015 Jan;44(1):15-27. doi: 10.1111/jop.12224. Epub 2014 Sep 12. PubMed PMID: 25212102.

**Pictures:**

**Immunohistochemistry** analysis in paraffin-embedded human breast carcinoma tissue using Cytokeratin 16 antibody (Cat.-No AP06197PU-N).



Western blot (WB) analysis of Cytokeratin 16 (S451) polyclonal antibody at 1:500 dilution. Lane 1: MCF-7 cell lysate. Lane 2: sp2/0 cell lysate. Lane 3: PC12 cell lysate.



Western blot analysis in extracts from HepG2 cells using Cytokeratin 16 antibody (Cat.-No AP06197PU-N).

