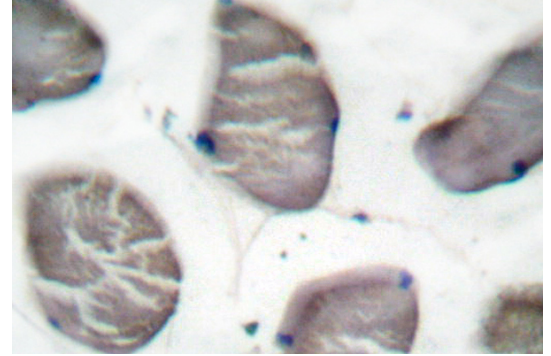


AP06000PU-N**Polyclonal Antibody to pan Actin - Aff - Purified**

Quantity:	0.1 mg
Concentration:	1.0 mg/ml
Background:	All eukaryotic cells express Actin, which often constitutes as much as 50% of total cellular protein. Actin filaments can form both stable and labile structures and are crucial components of microvilli and the contractile apparatus of muscle cells. While lower eukaryotes, such as yeast, have only one Actin gene, higher eukaryotes have several isoforms encoded by a family of genes. At least six types of Actin are present in mammalian tissues and fall into three classes. Alpha Actin expression is limited to various types of muscle, whereas beta and gamma are the principle constituents of filaments in other tissues. Members of the small GTPase family regulate the organization of the Actin cytoskeleton. Rho controls the assembly of Actin stress fibers and focal adhesion, Rac regulates Actin filament accumulation at the plasma membrane and Cdc42 stimulates formation of filopodia.
Host:	Rabbit
Immunogen:	Synthetic peptide, corresponding to amino acids C-terminus of Human Actin.
Format:	State: Liquid purified Ig fraction (>95% pure by SDS-PAGE) Purification: Affinity Chromatography using epitope-specific immunogen Buffer System: Phosphate buffered saline (PBS), pH 7.2. Preservatives: 15 mM Sodium Azide
Applications:	Western blot: 1/500-1/1000. Immunohistochemistry on Paraffin Sections: 1/50-1/200. Other applications not tested. Optimal dilutions are dependent on conditions and should be determined by the user.
Molecular Weight:	~45.0 kDa
Specificity:	This antibody detects endogenous levels of pan Actin (region surrounding Glu361).
Species Reactivity:	Tested: Human. Expected from sequence similarity: Mouse and Rat.
Storage:	Store undiluted at 2-8°C for one month or (in aliquots) at -20°C for longer. Avoid repeated freezing and thawing. Shelf life: one year from despatch.

Pictures:

Immunohistochemistry (IHC) analyzes of Actin antibody (Cat.-No.. AP06000PU-N) in paraffin-embedded human skeletal muscle tissue.



Western blot (WB) analysis of Actin antibody (Cat.-No.: AP06000PU-N) at 1/500 dilution
Lane1:Hela cell lysate
Lane2:Raw264.7 cell lysate
Lane3:PC12 cell lysate treated with UV

