

Polyclonal Antibody to Bcl-2-like 11 - Aff - Purified

Alternate names:	BCL2L11, BIM, Bcl2-L-11, Bcl2-interacting mediator of cell death, BimEL, BimL, BimS
Catalog No.:	AP03020PU-N
Quantity:	0.1 mg
Concentration:	1.0 mg/ml
Background:	<p>Members in the Bcl-2 family are critical regulators of apoptosis by either inhibiting or promoting cell death. Bim/BOD is a group of three splice variants, BimEL, BimL and BimS, with apparent molecular masses of ~23, 16, and 13 kDa, respectively.</p> <p>Bcl-2 homology 3 (BH3) domain is a potent death domain. BH3 domain containing pro-apoptotic proteins, including Bad, Bax, Bid, Bik, and Hrk, form a growing subclass of the Bcl-2 family. A novel BH3 domain containing protein was recently identified and designated Bim or BOD in human, mouse and rat (1,2). Bim/BOD interacts with diverse members in the pro-survival Bcl-2 sub-family including Bcl-2, Bcl-xL and Bcl-w. Bim/BOD induces apoptosis. The messenger RNA of Bim is ubiquitously expressed in multiple tissues and cell lines (1,2).</p>
Uniprot ID:	O43521
NCBI:	NP_001191035.1
GeneID:	10018
Host / Isotype:	Rabbit / IgG
Immunogen:	Internal central amino acids of Human Bim
Format:	State: Liquid purified Ig fraction Purification: Affinity Chromatography Buffer System: PBS Preservatives: 0.02% Sodium Azide
Applications:	Western blot: 1/1000. 1 µg/mL of this antibody was sufficient for detection of Bim in 20 µg of K562 and A549 cell lysates by colorimetric immunoblot analysis using Goat anti-Rabbit IgG:HRP as the secondary antibody. Immunohistochemistry: 1/50. Other applications not tested. Optimal dilutions are dependent on conditions and should be determined by the user.
Specificity:	Detects a 23 kD protein corresponding to the molecular mass of Bim on SDS PAGE immunoblots. Species: Human, Mouse, Rat. Other species not tested.

Storage:

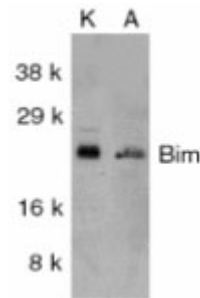
Store undiluted at 2-8°C for one month or (in aliquots) at -20°C for longer.
Avoid repeated freezing and thawing.
Shelf life: one year from despatch.

General Readings:

1. O'Connor L, Strasser A, O'Reilly LA, Hausmann G, Adams JM, Cory S, et al. Bim: a novel member of the Bcl-2 family that promotes apoptosis. *EMBO J.* 1998 Jan 15;17(2):384-95. PubMed PMID: 9430630.
2. Hsu SY, Lin P, Hsueh AJ. BOD (Bcl-2-related ovarian death gene) is an ovarian BH3 domain-containing proapoptotic Bcl-2 protein capable of dimerization with diverse antiapoptotic Bcl-2 members. *Mol Endocrinol.* 1998 Sep;12(9):1432-40. PubMed PMID: 9731710.

Pictures:

Western blot analysis of Bim in K562 (Left) and A549 (Right) whole cell lysates using a 1:1000 dilution of the antibody



IHC of Bim in human skin cancer cells using the antibody

