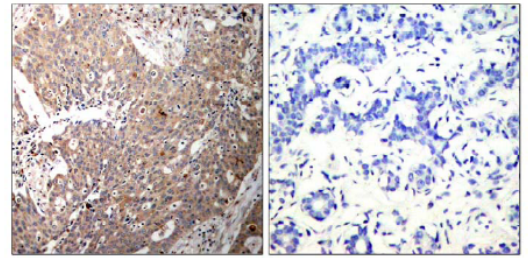


AP02789PU-N**Polyclonal Antibody to Cytokeratin 18 - Aff - Purified**

Alternate names:	CK18, CYK18, Cell proliferation-inducing gene 46 protein, Cytokeratin-18, K18, KRT18, Keratin 18, Keratin type I cytoskeletal 18, Keratin-18
Quantity:	0.1 mg
Concentration:	1.0 mg/ml
Background:	Cytokeratin 18 is an acidic keratin which is found primarily in non squamous epithelia and is present in a majority of adenocarcinomas and ductal carcinomas but not in squamous cell carcinomas. Cytokeratin 18 exists in combination with Cytokeratin 8, a basic keratin. Hepatocellular carcinomas have been reportedly defined by the use of antibodies that recognize only Cytokeratins 8 and 18.
Uniprot ID:	P05783
NCBI:	NP_000215.1
GeneID:	3875
Host:	Rabbit
Immunogen:	Peptide Sequence around amino acids 31~35 (A-A-S-V-Y) derived from Human Keratin 18.
Format:	State: Liquid purified IgG fraction. Purification: Affinity-Chromatography using epitope-specific immunogen. Buffer System: PBS (without Mg ²⁺ and Ca ²⁺), pH 7.4, 150 mM NaCl, 0.02% Sodium Azide and 50% Glycerol.
Applications:	Western blot: 1/500-1/1000. Note: Incubate membrane with diluted antibody in 5% nonfat milk, 1xTBS, 0.1% Tween-20 at 4°C with gentle shaking, overnight. Immunohistochemistry on Paraffin Sections: 1/50-1/100. Other applications not tested. Optimal dilutions are dependent on conditions and should be determined by the user.
Specificity:	This antibody detects endogenous levels of total Keratin 18 protein. Species: Human. Other species not tested.
Add. Information:	Molecular Weight: 46 kDa
Storage:	Store the antibody (in aliquots) at -20°C. Avoid repeated freezing and thawing. Shelf life: One year from despatch.
General Readings:	1. Ramaekers, F.C. and Bosman, F.T. (2004) J. Pathol. 204, 351-354. 2. Chang, L. and Goldman, R.D. (2004) Nat. Rev. Mol. Cell Biol. 5, 601-613. 3. Moll, R. et al. (1982) Cell 31, 11-24.

Pictures:

Figure 1. Immunohistochemical analysis of paraffin-embedded human breast carcinoma tissue using Keratin 18 antibody (#AP02789PU) (Left) or the same antibody preincubated with Blocking peptide (Right).



Peptide - +

Figure 2. Western blot analysis of extracts from 293 cells using Keratin 18 antibody (#AP02789PU).

