

AP02775PU-S**Polyclonal Antibody to Bcl-2-like 11 - Aff - Purified****Alternate names:**

BCL2L11, BIM, Bcl2-L-11, Bcl2-interacting mediator of cell death, BimEL, BimL, BimS

Quantity:

50 µg

Concentration:

1.0 mg/ml

Background:

Bim, Bcl-2 interacting mediator of cell death, is a pro-apoptotic protein belonging to the Bcl2 family of proteins containing a Bcl2 homology domain 3 (BH3). It is proapoptotic and exerts its effects by interacting with prosurvival members of the Bcl2 family like Bcl2, BclxL and Bclw. Bim is sequestered in an inactive conformation through binding to the microtubule-associated dynein motor complex. Certain apoptotic stimuli release Bim from microtubules, allowing inhibitory binding to anti-apoptotic Bcl-2 family members and subsequent initiation of apoptosis.

Uniprot ID:[O43521](#)**NCBI:**[NP_001191035.1](#)**GeneID:**[10018](#)**Host:**

Rabbit

Immunogen:

The antiserum was produced against synthesized non-phosphopeptide derived from Mouse BIM around the phosphorylation site of Serine 65 (P-A-Sp-P-G).

Format:**State:** Liquid purified IgG fraction.**Purification:** Affinity Chromatography using epitope-specific immunogen.**Buffer System:** PBS (without Mg²⁺ and Ca²⁺), pH 7.4 containing 150mM NaCl, 0.02% Sodium Azide and 50% Glycerol.**Applications:**

Immunohistochemistry: 1/50~1/100.

Western Blot: 1/500~1/1000.

Other applications not tested. Optimal dilutions are dependent on conditions and should be determined by the user.

Specificity:

BIM antibody detects endogenous levels of total BIM protein.

Species: Human, Mouse and Rat.

Other species not tested.

Storage:

Store the antibody at -20°C.

Avoid repeated freezing and thawing.

Shelf life: one year from despatch.

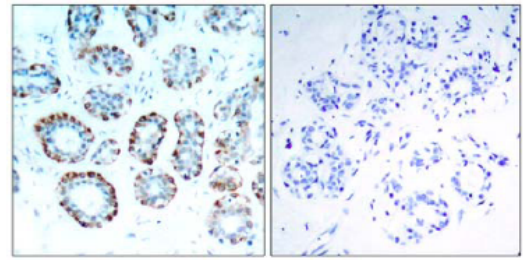
General Readings:

1. Fukazawa H, et al. (2004) Mol Cancer Ther ; 3(10): 1281-1288

2. Luciano F, et al. (2003) Oncogene ; 22(43): 6785-6793

Pictures:

Immunohistochemical analysis of paraffin-embedded human breast carcinoma tissue, using BIM antibody.



Western blot analysis of extract from Jukat cells untreated or treated with H₂O₂, using BIM antibody.

