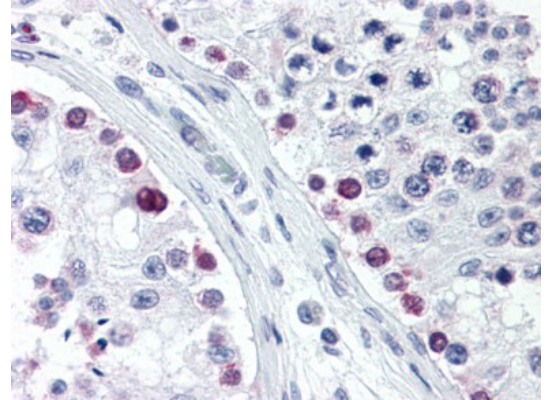


Monoclonal Antibody to BANF1

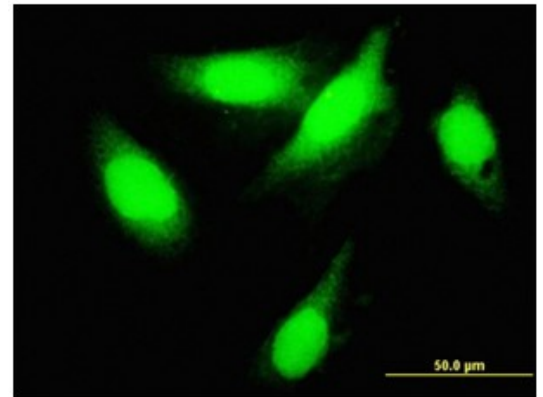
Alternate names:	BAF, BCRG1, Barrier-to-autointegration factor, Breakpoint Cluster Region Protein 1
Catalog No.:	AM20965PU-N
Quantity:	50 µg
Background:	The protein encoded by this gene was identified by its ability to protect retroviruses from intramolecular integration and therefore promote intermolecular integration into the host cell genome. The endogenous function of the protein is unknown. The protein forms a homodimer which localizes to the nucleus and is specifically associated with chromosomes during mitosis. This protein binds to DNA in a non-specific manner and studies in rodents suggest that it also binds to lamina-associated polypeptide 2, a component of the nuclear lamina.
Uniprot ID:	O75531
NCBI:	NP_001137457
GeneID:	8815
Host / Isotype:	Mouse / IgG2a
Clone:	3A4-4C7
Immunogen:	Recombinant protein, BANF1 (AAH05942, 1 a.a. ~ 90 a.a) full length recombinant protein with GST tag. MW of the GST tag alone is 26 KDa. Genename: BANF1
Format:	State: Liquid purified Ig fraction Purification: Protein A Chromatography Buffer System: PBS, pH 7.2
Applications:	Sandwich ELISA. Western Blot: Immunofluorescence: 10 µg/ml. <i>Positive Control:</i> HeLa cells Immunohistochemistry on paraffin sections: 5 µg/ml. Other applications not tested. Optimal dilutions are dependent on conditions and should be determined by the user.
Specificity:	This antibody reacts to Breakpoint Cluster Region Protein, Uterine Leiomyoma, 1; Barrier To Autointegration Factor (BCRP1) (BANF1). Species: Human. Other species not tested.
Storage:	Store the antibody at -20°C. Avoid repeated freezing and thawing. Shelf life: one year from despatch.

Pictures:

Human Testis: Formalin-Fixed, Paraffin-Embedded (FFPE)



Immunofluorescence of monoclonal antibody to BANF1 on HeLa cell (antibody concentration 10 µg/ml).



Detection limit for recombinant GST tagged BANF1 is approximately 0.03 ng/ml as a capture antibody.

