

AM09037PU-N**Monoclonal Antibody to Endoplasmin / HSP90B1 / TRA1
(676-803) - Purified**

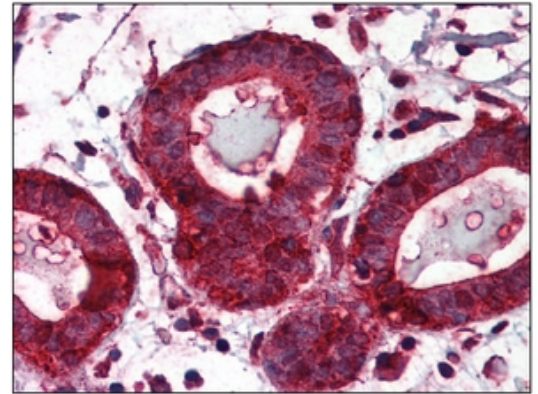
Alternate names:	94 kDa glucose-regulated protein, GRP94, Heat shock protein 90 kDa beta member 1, Tumor rejection antigen 1
Quantity:	0.1 ml
Concentration:	1.0 mg/ml
Background:	Tumor rejection antigen 1 (TRA1) is expressed on the surface of human teratocarcinoma stem cells (EC), human embryonic germ cells (EG) and human embryonic stem cells (ES). TRA1 is a marker protein of these stem cells.
Uniprot ID:	P14625
NCBI:	NP_003290.1
GeneID:	7184
Host / Isotype:	Mouse / IgG2a
Recommended Isotype Controls:	AM03096PU-N
Clone:	2H3
Immunogen:	Recombinant Human TRA1 (676-803 aa) purified from <i>E. coli</i>
Format:	State: Liquid purified Ig fraction Purification: Affinity Chromatography on Protein G Buffer System: PBS, pH 7.4 containing 0.02% Sodium Azide and 10% Glycerol
Applications:	ELISA. Western blot. Immunofluorescence (1/100-1/200). Immunohistochemistry on Paraffin Sections (5 µg/ml). Other applications not tested. Optimal dilutions are dependent on conditions and should be determined by the user.
Specificity:	The antibody recognizes Human TRA1. Other species not tested.
Storage:	Store undiluted at 2-8°C for up to two weeks or (in aliquots) at -20°C for longer. Avoid repeated freezing and thawing. Shelf life: one year from despatch.
Product Citations:	Purchased from Acris: 1. Ohkubo S, Kodama Y, Muraoka H, Hitotsumachi H, Yoshimura C, Kitade M, et al. TAS-116, a Highly Selective Inhibitor of Heat Shock Protein 90α and β, Demonstrates Potent Antitumor Activity and Minimal Ocular Toxicity in Preclinical Models. <i>Mol Cancer Ther.</i> 2015 Jan;14(1):14-22. doi: 10.1158/1535-7163.MCT-14-0219. Epub 2014 Nov 21. PubMed PMID: 25416789.

General Readings:

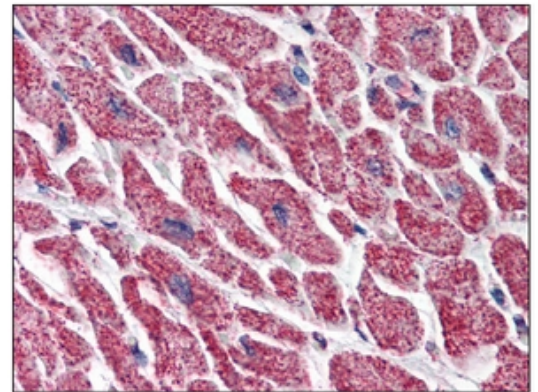
1. Wulf GM, et al., (2002) J Biol. Chem. 277(50)47976-47979.
2. Hamdane M, et al., (2002) J Mol Neurosci. 19(3) ; 275-287.
3. Zheng H, et al., (2002) Nature 419(6909) 853-857.
4. Lu,k.P. et al., (1996) Nature 380(6574) 544-547.
5. Campbell HD, Webb GC, Fountain S, Young IG. The human PIN1 peptidyl-prolyl cis/trans isomerase gene maps to human chromosome 19p13 and the closely related PIN1L gene to 1p31. Genomics. 1997 Sep 1;44(2):157-62. PubMed PMID: 9299231.

Pictures:

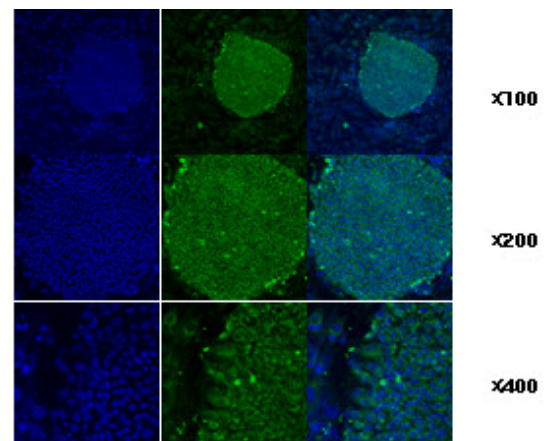
Immunohistochemistry: AM09037PU-N HSP90B1 antibody staining of Formalin-Fixed, Paraffin-Embedded Human Breast at 5 µg/ml followed by biotinylated anti-Mouse IgG secondary antibody, Alkaline Phosphatase-Streptavidin and chromogen.



Immunohistochemistry: AM09037PU-N HSP90B1 antibody staining of Formalin-Fixed, Paraffin-Embedded Human Heart at 5 µg/ml followed by biotinylated anti-Mouse IgG secondary antibody, Alkaline Phosphatase-Streptavidin and chromogen.



Immunofluorescence staining of human ES cell colony with monoclonal anti-human TRA1 antibody (2H3).



Western blot analysis: The cell lysates of hES (20 ug) were resolved by SDS-PAGE, transferred to PVDF membrane and probed with AM09037PU-N HSP90B1 antibody (1/500). Proteins were visualized using a goat anti-mouse secondary antibody conjugated to HRP and an ECL detection system.

