

**AM09004PU-S****Monoclonal Antibody to Apolipoprotein J / Apo J - Purified****Alternate names:**

40, 40, AAG4, APOJ, Aging-associated gene 4 protein, CLI, Clusterin, Complement cytolysis inhibitor, Complement-associated protein SP-40, KUB1, Ku70-binding protein 1, NA1/NA2, SP-40, Testosterone-repressed prostate message 2

**Quantity:**

50 µl

**Concentration:**

1.0 mg/ml

**Background:**

Clusterin has been implicated in numerous processes including active cell death, immune regulation, cell adhesion and morphological transformation. Clusterin (previously named SP-40) is a glycoprotein, 80 kDa comprising two distinct 40kDa polypeptide chains. It shows marked similarity, both physicochemically and in immunohistological distribution, to the single chain, 80kDa, Sprotein, an additional component of the SC5b-9 complex. Clusterin is a secreted glycoprotein of which the exact function remains a matter for speculation.

**Uniprot ID:**

[P10909](#)

**NCBI:**

[NP\\_976084.1](#)

**GenelD:**

[1191](#)

**Host / Isotype:**

Mouse / IgG1

**Recommended Isotype**

SM10P (for use in human samples), AM03095PU-N

**Controls:****Clone:**

1A11

**Immunogen:**

Recombinant Human Clusterin (1-333 aa) purified from *E. coli*.

**Format:**

**State:** Liquid purified Ig fraction

**Purification:** Affinity Chromatography on Protein G

**Buffer System:** PBS, pH 7.4 containing 0.02% Sodium Azide and 10% Glycerol

**Applications:**

**ELISA.**

**Western blot** (1/1,000-1/2,000).

**Flow Cytometry.**

**Immunohistochemistry on Paraffin Sections** (1/100-1/200).

**Immunofluorescence/Immunocytochemistry.**

Other applications not tested. Optimal dilutions are dependent on conditions and should be determined by the user.

**Specificity:**

The antibody recognizes Human Clusterin. Other species not tested.

**Storage:**

Store undiluted at 2-8°C for up to two weeks or (in aliquots) at -20°C for longer.

Avoid repeated freezing and thawing.

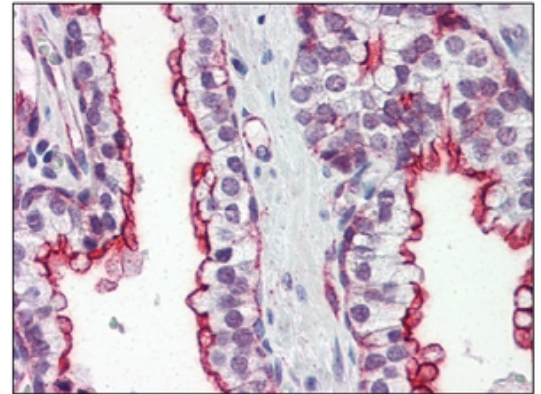
Shelf life: one year from despatch.

**General Readings:**

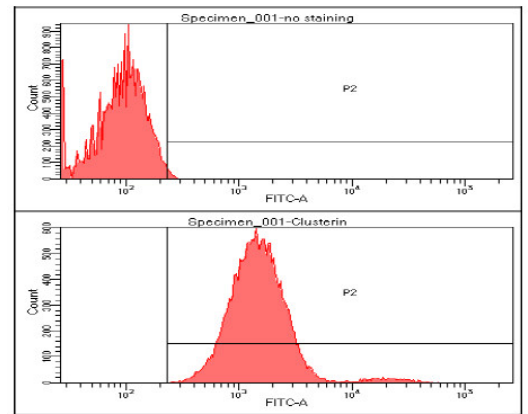
1. Maximino R et al., (2000) *Am J Pathol* 157(2):393-399.
2. Ingrid C.G et al., (1998) *Biochem J* 331:231-237.
3. Maximino R et al., (1990) *J Clin Invest* 85:1477-1486.
4. Fabien L et al., (2006) *Biochem J* 395(1):223-231.

**Pictures:**

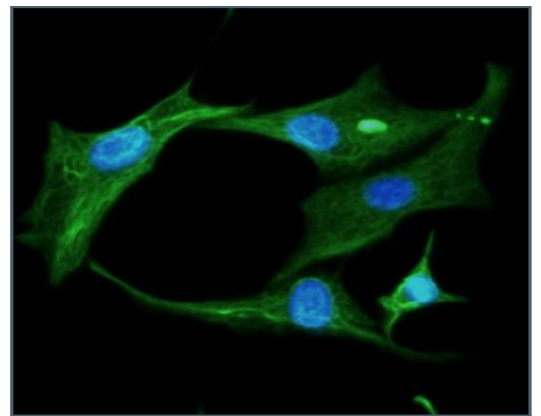
**Immunohistochemistry:** AM09004PU-N Clusterin antibody staining of Formalin-Fixed, Paraffin-Embedded Human Prostate at 10 µg/ml followed by biotinylated anti-Mouse IgG secondary antibody, Alkaline Phosphatase-Streptavidin and chromogen.



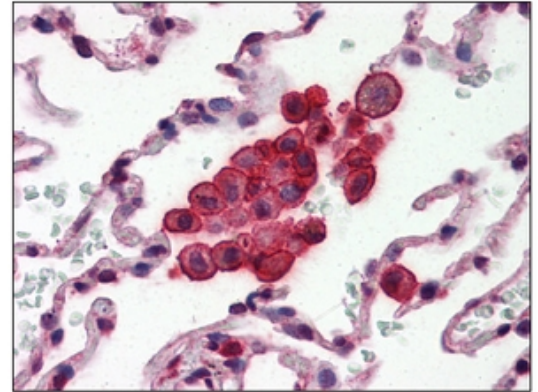
**Flow cytometry analysis** of Clusterin in U87MG cell line, staining at 2-5ug for 1x10<sup>6</sup> cells. The secondary antibody used goat anti-mouse IgG Alexa fluor 488 conjugate



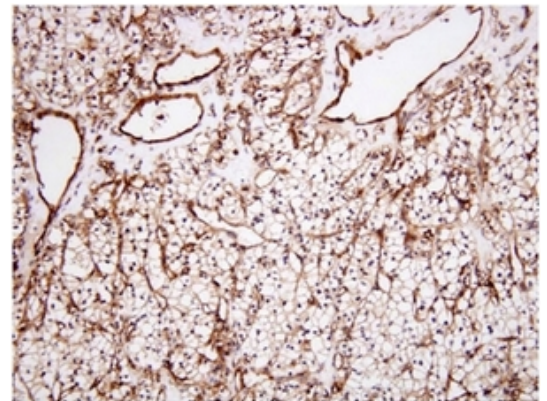
**Immunofluorescence:** ICC/IF analysis of Clusterin in U87MG cells line, stained with DAPI (Blue) for nucleus staining and monoclonal anti-human Clusterin antibody (1:100) with goat anti-mouse IgG-Alexa fluor 488 conjugate (Green).



**Immunohistochemistry:** AM09004PU-N Clusterin antibody staining of Formalin-Fixed, Paraffin-Embedded Human Lung at 10 µg/ml followed by biotinylated anti-Mouse IgG secondary antibody, Alkaline Phosphatase-Streptavidin and chromogen.



**Immunohistochemistry:** Paraffin embedded sections of human renal cell carcinoma tissue were incubated with anti-human Clusterin antibody Cat.-No AM09004PU-N (1/100) for 2 hours at room temperature. Antigen retrieval was performed in 0.1 M sodium citrate buffer and detected using Diaminobenzidine (DAB).



**Western blot analysis:** Cell lysates of U87MG(20ug) were resolved by SDS-PAGE, transferred to NC membrane and probed with anti-Human Clusterin antibody Cat.-No AM09004PU-N (1/1000). Proteins were visualized using a Goat anti-Mouse secondary antibody conjugated to HRP and an ECL detection system.

