

**AM08364PU-N****Monoclonal Antibody to Caspase-7 (Active Form) - Purified**

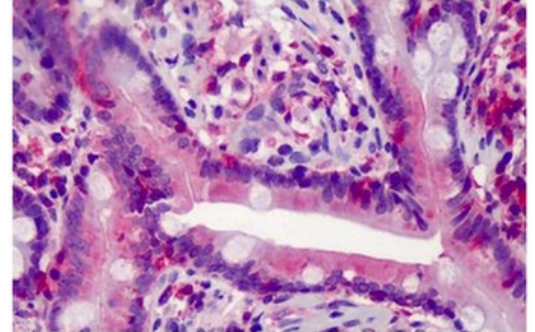
<b>Alternate names:</b>	Apoptotic protease Mch-3, CASP-7, CASP7, CMH-1, ICE-like apoptotic protease 3, MCH3
<b>Quantity:</b>	50 µg
<b>Concentration:</b>	0.5 mg/ml
<b>Background:</b>	Caspases are a family of cysteine proteases that are key mediators of programmed cell death or apoptosis. The precursor form of all caspases is composed of a prodomain, and large and small catalytic subunits. The active forms of caspases are generated by several stimuli including ligand-receptor interactions, growth factor deprivation and inhibitors of cellular functions. All known caspases require cleavage adjacent to aspartates to liberate one large and one small subunit, which associate into a2b2 tetramer to form the active enzyme. Caspase-7 is derived from the cleavage of proMCH3-alpha into 2 subunits, p20 and p12 by Caspase-3. Sequence analysis revealed that the MCH3-alpha amino acid sequence had the highest homology to caspase-3 (53% identity) and less than 37% identity with all other family members.
<b>Uniprot ID:</b>	<a href="#">P55210</a>
<b>NCBI:</b>	<a href="#">NP_001218.1</a>
<b>GenelD:</b>	<a href="#">840</a>
<b>Host / Isotype:</b>	Mouse / IgG1
<b>Recommended Isotype Controls:</b>	SM10P (for use in human samples), AM03095PU-N
<b>Clone:</b>	25B881.1
<b>Immunogen:</b>	Recombinant protein of Active form of Human Caspase-7
<b>Format:</b>	<b>State:</b> Liquid purified Ig fraction <b>Purification:</b> Affinity Chromatography on Protein G <b>Buffer System:</b> PBS <b>Preservatives:</b> 0.05% Sodium Azide <b>Stabilizers:</b> 0.2% Gelatin
<b>Applications:</b>	<b>Immunohistochemistry on Paraffin Sections:</b> 10 µg/ml. <b>Western Blot:</b> 1 - 2 µg/ml. Other applications not tested. Optimal dilutions are dependent on conditions and should be determined by the user.
<b>Specificity:</b>	Recognizes Human Caspase 7 (CASP7). Other species not tested.
<b>Storage:</b>	Store undiluted at 2-8°C for one month or (in aliquots) at -20°C for longer. Avoid repeated freezing and thawing. Shelf life: one year from despatch.

**General Readings:**

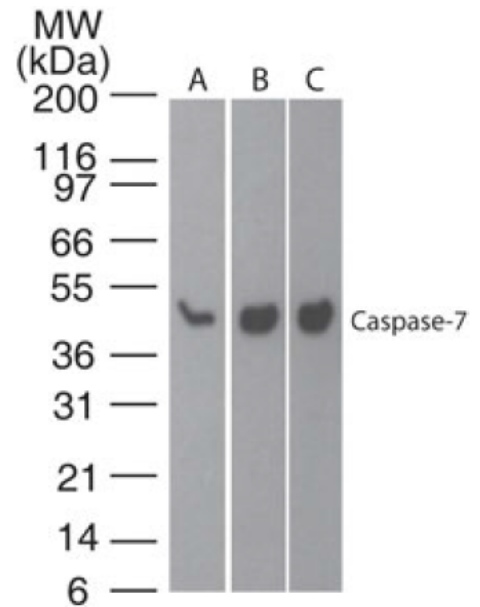
1. Fernandes-Alnemri T, Takahashi A, Armstrong R, Krebs J, Fritz L, Tomaselli KJ, et al. Mch3, a novel human apoptotic cysteine protease highly related to CPP32. *Cancer Res.* 1995 Dec 15;55(24):6045-52. PubMed PMID: 8521391.
2. Cohen GM. Caspases: the executioners of apoptosis. *Biochem J.* 1997 Aug 15;326 ( Pt 1):1-16. PubMed PMID: 9337844.

**Pictures:**

Formalin-Fixed, Paraffin-Embedded Human Small intestine stained with Caspase-7 Antibody  
 Cat.-No AM08364PU-N at 10 µg/ml after heat-induced antigen retrieval.



Western blot analysis of Caspase-7 in A) Human brain, B) Mouse brain and C) Rat brain lysate using Caspase-7 Antibody  
 Cat.-No AM08364PU-N at 1 µg/ml.



Western blot analysis for Human Caspase-7 using Jurkat cell lysates with antibody at 2 µg/ml (Lane 1) and 0.5 µg/ml (Lane 2) dilution. Antibody detects only the 35 kDa Caspase-7 corresponding to pro-Caspase-7 in non-apoptotic Jurkat cells.

