



Order Information

Description: Rabbit anti Phospho-STAT6(pY641)
 Catalogue#: 500-12104
 Lot#: See the label
 Size: 100 ug/200 ul
 Host: Rabbit
 Clone: N/A
 Application: ELISA, WB, IHC
 Reactivity: Hu, Rt, Ms..

Rabbit anti-Phospho- STAT6 (pTyr⁶⁴¹)

Synonym: Signal transducer and activator of transcription 6 (STAT6), IL-4-STAT6

ANTIGEN PREPARATION

A synthetic peptide surrounding to the epitope -RGYVP-- with phosphorylation sites at Tyr641 of STAT6 protein from human, mouse and rat origins.

BACKGROUND

STAT proteins (Signal transducer and activator of transcription) belong to a family of cytoplasmic transcription factors that can be phosphorylated by a ligand binding to its cell surface receptor. Activation by phosphorylation of STAT6 at tyrosine 641 upon the IL-4 (possibly IL-13) ligand binding to its receptor induces dimerization, nuclear translocation and DNA binding. STAT6 is widely expressed in human tissues. It exhibits elevated expression in peripheral blood lymphocytes, colon, intestine, ovary, prostate, thymus, spleen, kidney, liver, lung, and placenta. STAT6 mediates the IL-4 signal and is essential for the proper development of adaptive immunity.

PURIFICATION

The Rabbit IgG is purified by site-modified Epitope Affinity Purification.

FORMULATION

This affinity purified antibody is supplied in sterile Tris-buffered saline (pH7.2) containing antibody stabilizer

SPECIFICITY

This antibody recognizes STAT6 (pY641) with a phosphorylated sites of Tyr641. It does not cross-react with non-phosphospecific peptide.

STORAGE

The antibodies are stable for 12 months from date of receipt when stored at -20°C to -70°C. The antibodies can be stored at 2°C-8°C for three month without detectable loss of activity. Avoid repeated freezing-thawing cycles.

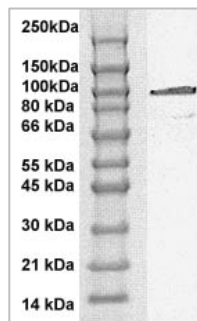
APPLICATIONS/SUGGESTED WORKING DILUTIONS

Western Blot	0.1-1 µg/ml
ELISA	0.01-0.1 µg/ml
Immunoprecipitation	2-5 µg/ml
IHC	1:100 µg/ml
Flow cytometry	Not tested

MOLECULAR WEIGHT:	95 kDa
POSITIVE CONTROL:	HepG2
CELLULAR LOCATION:	Nuclear

Optimal dilutions should be determined by researchers for the specific applications.

DATA ATTACHMENTS



Western Blot: The whole cell lysate derived from IL- 4 treated HepG2 was immunoblotted by Rabbit anti STAT6 (pY641) (Cat#500-12104) antibody at 1:500.

REFERENCES

Zhiguang Li et al (2008). Endogenous Interleukin-4 Promotes Tumor Development by Increasing Tumor Cell Resistance to Apoptosis. Cancer Research 68, 8687-94.

FOR RESEARCH USE ONLY.



igh basal STAT4 balanced by STAT1 induction to control type 1 interferon effects in natural killer cells. J Exp Med. 2007 October 1; 204(10): 2383–2396.

FOR RESEARCH USE ONLY.

AbboMax, Inc 1161 Ringwood Ct. Suite 100, San Jose, California 95131, USA
1 408-321-9898 (Tel). 1 408-321-9896 (Fax). 1-866-628-9898 www.abbomax.com info@abbomax.com